



2020 Sustainable Campus Index



Table of Contents

Introduction	3
Top Performers by Impact Area	4
Air & Climate	5
Buildings	7
Campus Engagement	9
Coordination & Planning	11
Curriculum	13
Diversity & Affordability	15
Energy	17
Food & Dining	19
Grounds	21
Investment & Finance	23
Public Engagement	25
Purchasing	27
Research	29
Transportation	32
Waste	34
Water	36
Wellbeing & Work	39
Overall Top Performers	41
Associate Colleges	42
Baccalaureate Institutions	43
Master's Institutions	44
Doctoral Institutions	45
Overall Average Scores	46
Institutional Highlights	47
Methodology	67
About STARS	69
STARS of Data Accuracy	70
STARS Ratings	71
About AASHE	80

On the cover:

Lisa Miskelly, Associate Director for Food and Farm at Lafayette College, continues to harvest and distribute produce during COVID-19. Photo credit: Lafayette College



All of the images in this report are provided courtesy of the featured institutions. We are grateful to the 51 colleges and universities that shared images with us.

AASHE supports COVID-19 guidelines for mask-wearing and social distancing. Some images in this report were taken before COVID, and may not align with current standards.

Introduction

The 2020 Sustainable Campus Index (SCI) recognizes top-performing colleges and universities overall by institution type and in 17 sustainability impact areas, as measured by the Sustainability Tracking, Assessment & Rating System (STARS). STARS is a voluntary framework used by hundreds of colleges and universities to measure, report, and strengthen their contributions to global sustainability. The SCI also includes innovative and high-impact institutional highlights, and recognizes institutions with exceptional report accuracy and quality.

Student Green Advisors at Swarthmore College. Swarthmore's Office of Sustainability innovatively matches student Green Advisors with staff Sustainability Advocates to implement sustainability projects on campus.



Top Performers by Impact Area

Highest scores in 17 sustainability impact areas related to academics, engagement, operations and administration.

A LaFarm student employee harvesting tomatoes at Lafayette College, a Top Performer under Food & Dining (see [page 20](#)). Photo credit: Lafayette College





Air & Climate



Colorado College Office of Sustainability Interns proudly display the culmination of many of their efforts. The college achieved carbon neutrality on January 1, 2020. See Institutional Highlight on [page 53](#). Photo credit: Ian Johnson

Global climate change is having myriad negative impacts throughout the world, including increased frequency and potency of extreme weather events, sea-level rise, species extinction, water shortages, declining agricultural production and the spread of diseases. The impacts are particularly pronounced for low-income communities and countries. Institutions that inventory and take steps to reduce their air pollutant emissions can positively impact the health of their local communities and regions. This section covers greenhouse gas emissions assessment and mitigation and outdoor air quality.

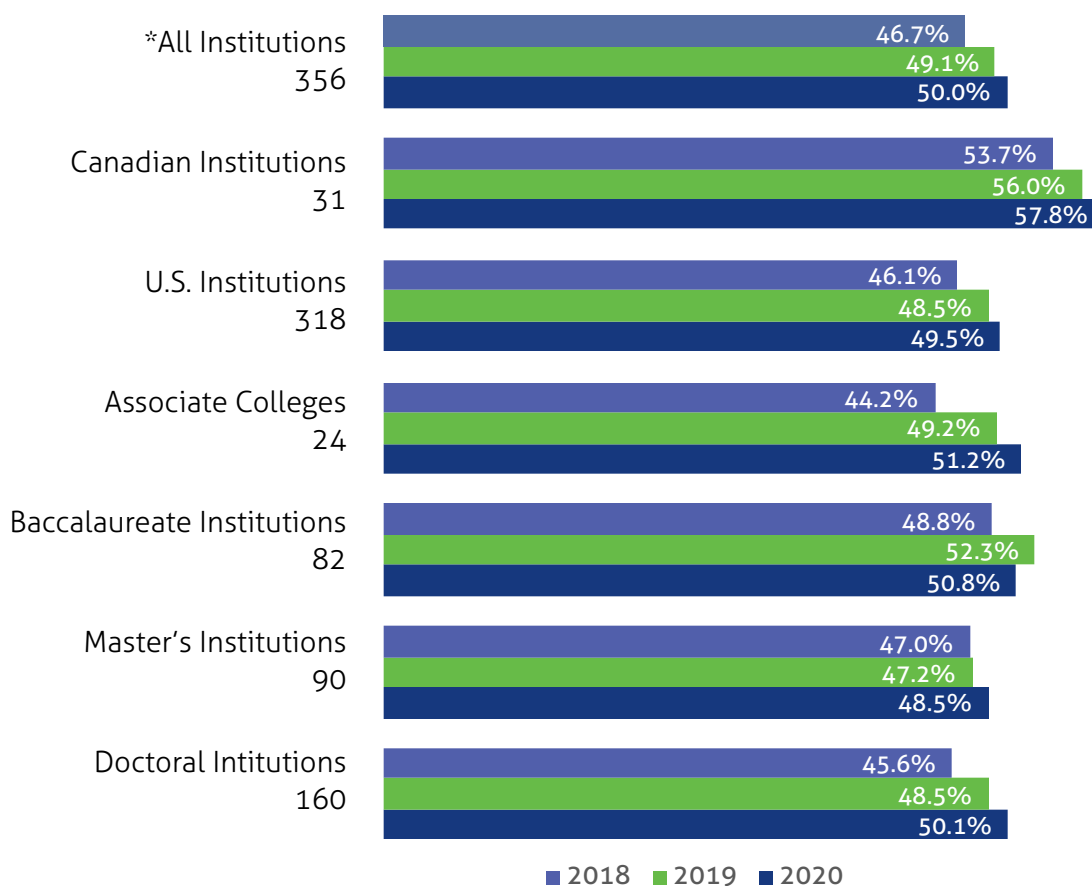


Air & Climate

Top Performers

Rank	Institution	Score	Type	Location
1(t)	Arizona State University	100%	Doctoral	Tempe, AZ
1(t)	Colby College	100%	Baccalaureate	Waterville, ME
3	Bowdoin College	98.5%	Baccalaureate	Brunswick, ME
4	Thompson Rivers University	96.2%	Master's	Kamloops, BC
5	Middlebury College	95.5%	Baccalaureate	Middlebury, VT
6	Universite Laval	95.5%	Doctoral	Quebec City, QC
7	American University	94.5%	Doctoral	Washington, DC
8	Bentley University	93.9%	Master's	Waltham, MA
9	Raritan Valley Community College	93.2%	Associate	Branchburg, NJ
10	Simon Fraser University	91.6%	Doctoral	Burnaby, BC

Average Scores



*Amounts listed here and in subsequent graphs correspond to 2020 counts.



Buildings



The Science and Engineering Building 2 at University of California, Merced, a Top Performer in Buildings, features solar panels that help power the building and provide shade during the hottest months, as well as a rooftop lab for researchers to gather data. Photo credit: Veronica Adrover

Buildings are generally the largest user of energy and the largest source of greenhouse gas emissions on campuses. Buildings also use significant amounts of potable water. Institutions can design, build and maintain buildings in ways that provide a safe and healthy indoor environment for inhabitants while simultaneously mitigating the building's impact on the outdoor environment. This section covers the maintenance and operations of existing buildings as well as new building design and construction.

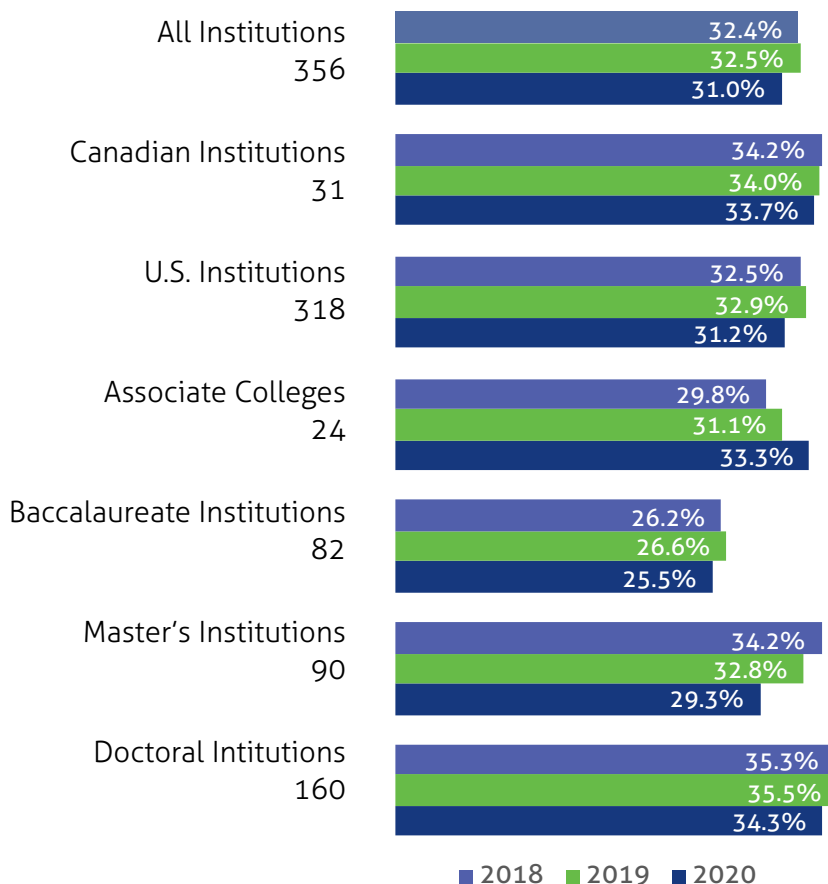


Buildings

Top Performers

Rank	Institution	Score	Type	Location
1	University of California, Merced	64.6%	Doctoral	Merced, CA
2	University of California, Irvine	63.3%	Doctoral	Irvine, CA
3	Chatham University	62.5%	Master's	Pittsburgh, PA
4	Nova Scotia Community College	61.6%	Associate	Halifax, NS
5	University of California, Los Angeles	60.4%	Doctoral	Los Angeles, CA
6	University of California, Santa Barbara	59.8%	Doctoral	Santa Barbara, CA
7	University of California, Davis	58.6%	Doctoral	Davis, CA
8	Arizona State University	58.4%	Doctoral	Tempe, AZ
9	Cornell University	56.9%	Doctoral	Ithaca, NY
10	University of California, Berkeley	56.6%	Doctoral	Berkeley, CA

Average Scores





Campus Engagement



The farmer's market at Cornell provides fresh, healthy food to the campus - and is completely run by students. Cornell is a Top Performer in Campus Engagement. Photo credit: Cornell University Photography

Engaging in sustainability through co-curricular activities allows students, faculty and staff to deepen and apply their understandings of sustainability principles. Co-curricular sustainability offerings help integrate sustainability into the campus culture and encourage behavior changes that promote sustainability. This section covers student and employee sustainability education programs and orientations, assessment of sustainability culture, outreach materials and campaigns.

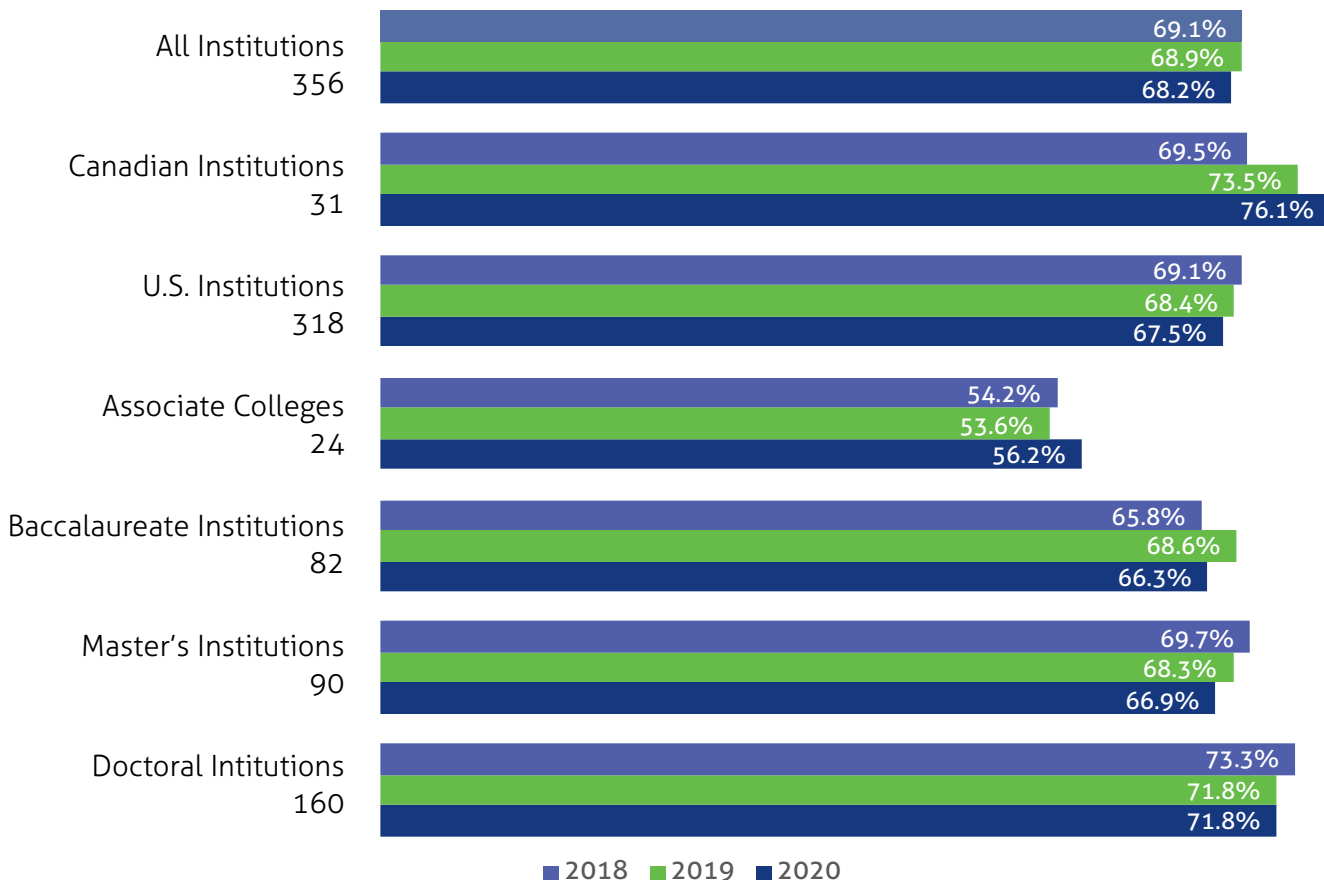


Campus Engagement

Top Performers

Rank	Institution	Score	Type	Location
1(t)	Berea College	100.0%	Baccalaureate	Berea, KY
1(t)	Cornell University	100.0%	Doctoral	Ithaca, NY
1(t)	University of Connecticut	100.0%	Doctoral	Storrs, CT
4	Thompson Rivers University	99.3%	Master's	Kamloops, BC
5(t)	Colby College	98.8%	Baccalaureate	Watervill, ME
5(t)	Colorado State University	98.8%	Doctoral	Fort Collins, CO
5(t)	Dickinson College	98.8%	Baccalaureate	Carlisle, PA
8(t)	Mount Royal University	97.6%	Baccalaureate	Calgary, AB
8(t)	Stanford University	97.6%	Doctoral	Stanford, CA
8(t)	University of Calgary	97.6%	Doctoral	Calgary, AB
8(t)	University of Missouri	97.6%	Doctoral	Columbia, MO

Average Scores





Coordination & Planning



Polytechnique Montréal's Sustainability Office organized a series of activities to involve the community in co-constructing the institution's 2020-2024 Sustainability Action Plan. See Institutional Highlight on [page 57](#). Photo credit: Polytechnique Montreal

Coordination and planning help institutions organize, implement and publicize sustainability initiatives. These efforts help to provide the infrastructure to foster sustainability, establish priorities, guide decision making and budgeting, and clarify a vision for a sustainable future. This section covers sustainability planning, coordination and participatory governance.



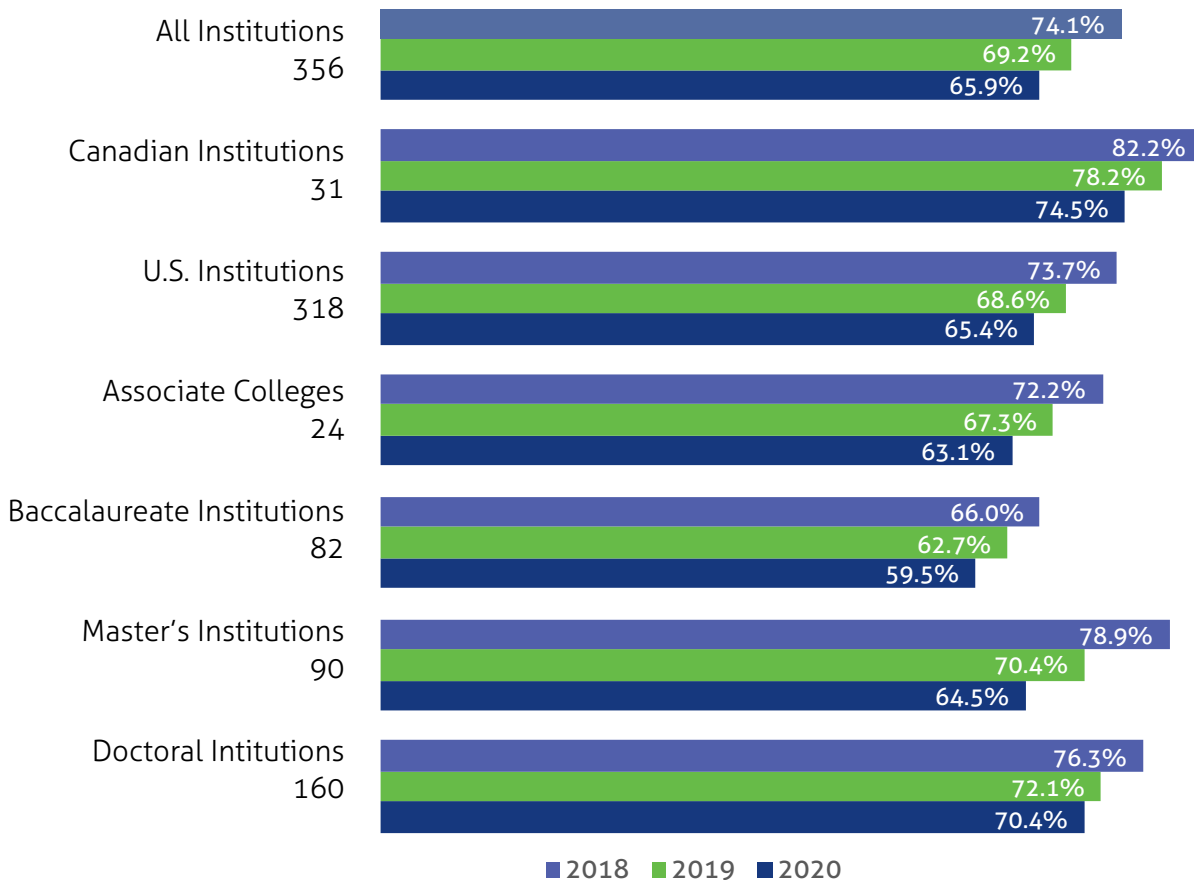
Coordination & Planning

Top Performers

Rank	Institution	Score	Type	Location
1(t)	Thompson Rivers University	100.0%+	Master's	Kamloops, BC
1(t)	University of Alberta	100.0%+	Doctoral	Edmonton, AB
3(t)	Cornell University	100.0%	Doctoral	Ithaca, NY
3(t)	Universite Laval	100.0%	Doctoral	Quebec City, QC
3(t)	University of Calgary	100.0%	Doctoral	Calgary, AB
3(t)	University of California, Irvine	100.0%	Doctoral	Irvine, CA
3(t)	University of Georgia	100.0%	Doctoral	Athens, GA
3(t)	University of Manitoba	100.0%	Doctoral	Winnipeg, MB
9(t)	Colorado State University	96.9%+	Doctoral	Fort Collins, CO
9(t)	Florida State University	96.9%+	Doctoral	Tallahassee, FL

Tiebreaks (+) were determined based on points earned in Exemplary Practice credits related to this impact area.

Average Scores





Curriculum



Students applying sustainability science in the field at Unity College, a Top Performer in Curriculum. Photo credit: Unity College

Higher education institutions are uniquely positioned to understand and address sustainability challenges. Colleges and universities help equip students to lead society to a sustainable future by developing and offering learning opportunities in sustainability. This section covers courses, programs and learning outcomes in sustainability, living laboratory initiatives, immersive experiences, sustainability literacy and faculty development.

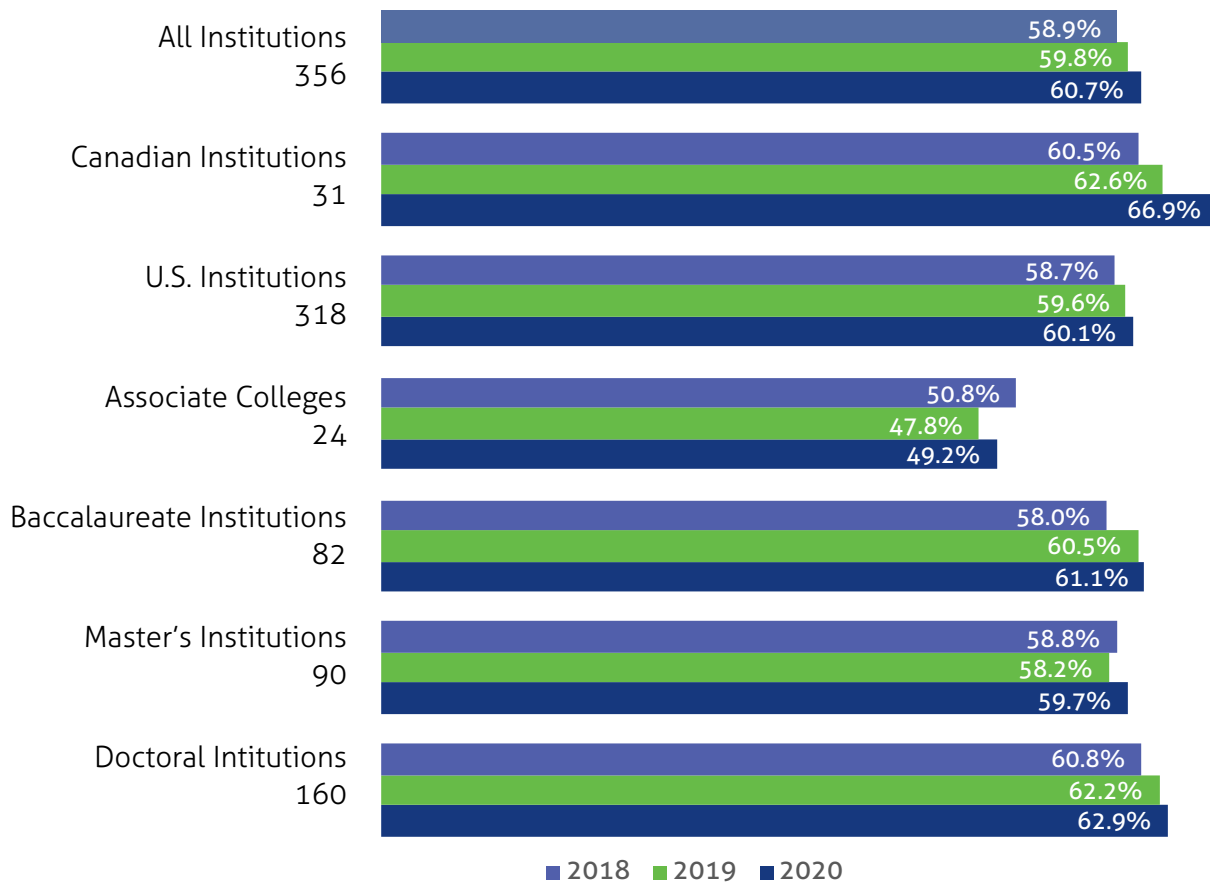


Curriculum

Top Performers

Rank	Institution	Score	Type	Location
1	Colorado State University	100.0%	Doctoral	Fort Collins, CO
2	Northland College	99.7%	Baccalaureate	Ashland, WI
3	University of Connecticut	97.9%	Doctoral	Storrs, CT
4	Seattle University	97.2%	Master's	Seattle, WA
5	University of New Hampshire	96.5%	Doctoral	Durham, NH
6	Cornell University	96.1%	Doctoral	Ithaca, NY
7	Stanford University	95.5%	Doctoral	Stanford, CA
8(t)	College of the Atlantic	95.0%	Baccalaureate	Bar Harbor, ME
8(t)	SUNY College of Environmental Science and Forestry	95.0%	Doctoral	Syracuse, NY
8(t)	Unity College	95.0%	Baccalaureate	Unity, ME

Average Scores





Diversity & Affordability



Dr. Dorceta Taylor engages students and community members in discussions on sustainable agriculture, food justice, inclusion and diversity at Western Michigan University ([STARS Silver](#)).

Higher education opens doors to opportunities that can help create a more equitable world and must be accessible to all regardless of race, gender, religion, socioeconomic status and other differences. A diverse body of students, faculty and staff provide rich resources for learning and collaboration. This section covers diversity coordination, assessment for campus equity, discrimination response, higher education affordability and access, increasing faculty diversity, and support and recruitment of underrepresented students, faculty and staff.

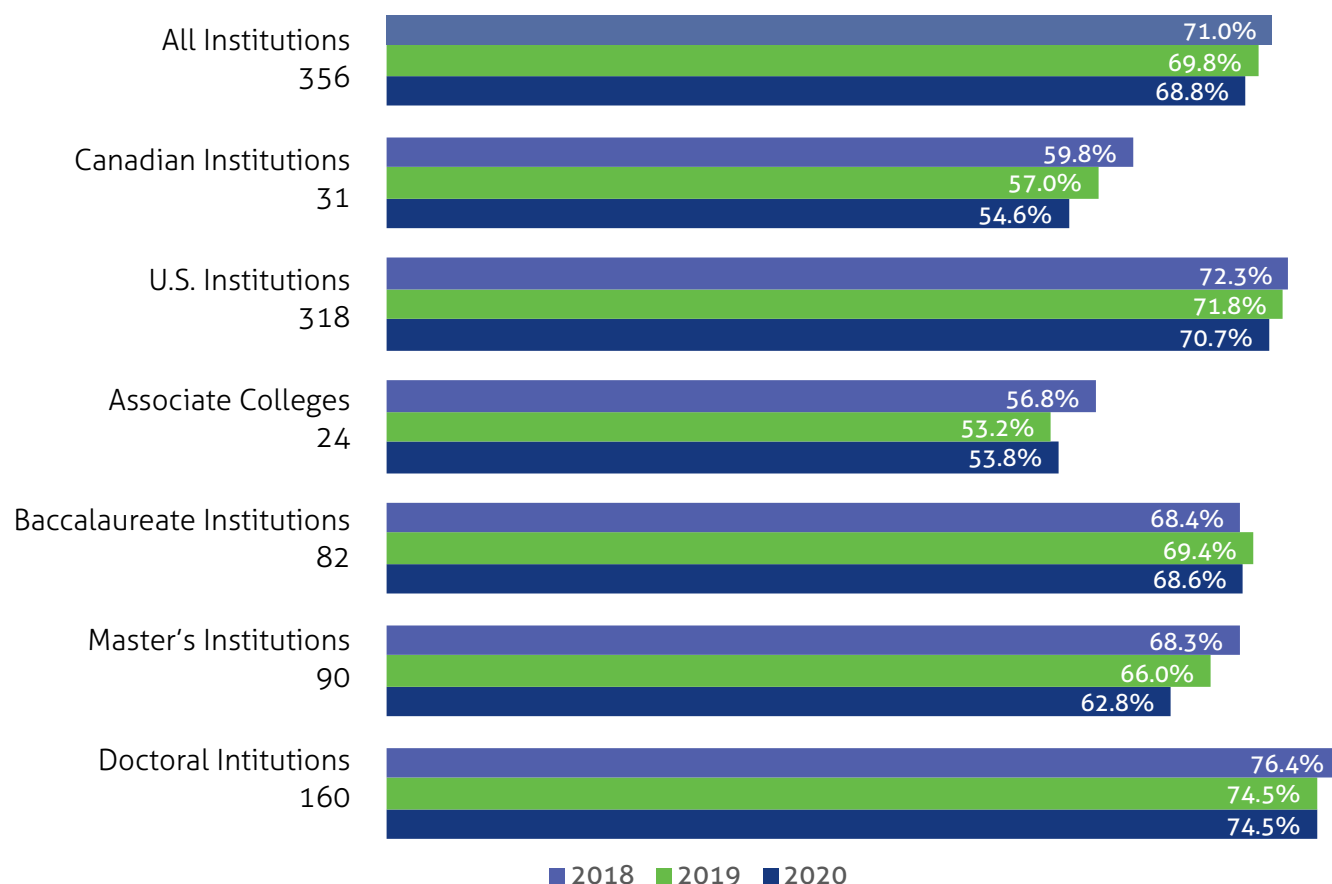


Diversity & Affordability

Top Performers

Rank	Institution	Score	Type	Location
1	Stanford University	98.7%	Doctoral	Stanford, CA
2	Rice University	97.9%	Doctoral	Houston, TX
3	University of Texas Rio Grande Valley	96.2%	Doctoral	Edinburg, TX
4	University of California, Berkeley	96.1%	Doctoral	Berkeley, CA
5	Thompson Rivers University	95.4%	Master's	Kamloops, BC
6	University of California, Irvine	95.3%	Doctoral	Irvine, CA
7(t)	Emory University	95.2%	Doctoral	Atlanta, GA
7(t)	University of Pennsylvania	95.2%	Doctoral	Philadelphia, PA
9	Washington University in St. Louis	95.1%	Doctoral	Saint Louis, MO
10	Indiana University-Purdue University Indianapolis	94.9%	Doctoral	Indianapolis, IN

Average Scores





Energy



Cal Poly students conduct research at the Gold Tree Solar Farm. See Institutional Highlight on [page 50](#). Photo credit: Tony Tran

For most institutions, energy consumption is the largest source of greenhouse gas emissions. Implementing conservation measures and switching to renewable sources of energy can help institutions save money and protect them from utility rate volatility. Renewable energy may be generated locally and allow campuses to support local economic development. Furthermore, institutions can help shape markets by creating demand for cleaner, renewable sources of energy. This section recognizes energy reduction and development and use of clean and renewable energy sources.

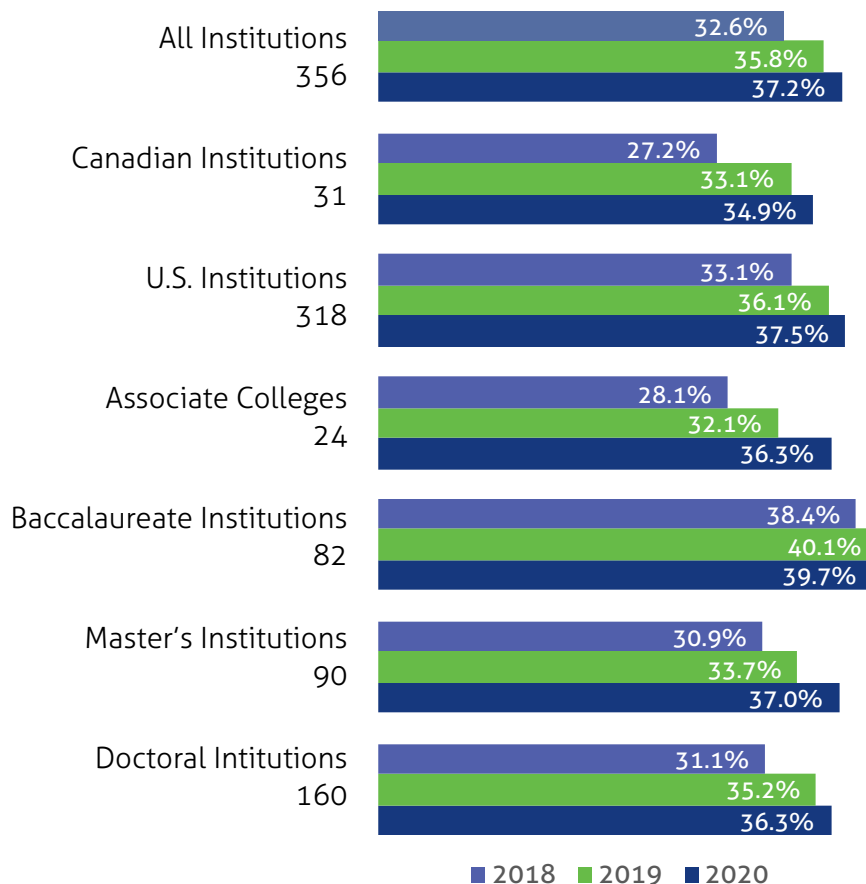


Energy

Top Performers

Rank	Institution	Score	Type	Location
1	Thompson Rivers University	83.5%	Master's	Kamloops, BC
2	Stanford University	73.7%	Doctoral	Stanford, CA
3(t)	University of New Hampshire	69.7%	Doctoral	Durham, NH
3(t)	University of South Florida	69.7%	Doctoral	Tampa, FL
5	University of Idaho	68.1%	Doctoral	Moscow, ID
6	American University	67.5%	Doctoral	Washington, DC
7	University of Colorado Colorado Springs	66.4%	Master's	Colorado Springs, CO
8	Arizona State University	65.7%	Doctoral	Tempe, AZ
9	College of the Atlantic	65.3%	Baccalaureate	Bar Harbor, ME
10	University of California, Davis	64.9%	Doctoral	Davis, CA

Average Scores





Food & Dining



Julieta Rendon Mendoza '21 and Dining Staff serve picadas at Smith College's Climate Equity and Justice Conference Opening Reception. Smith College is a Top Performer in Food & Dining. Photo credit: Claire Seaman '20

Institutions can use their food purchases to support local economies, encourage environmentally friendly and humane farming methods, help eliminate unsafe working conditions and alleviate poverty for farmworkers. These actions help reduce environmental impacts, preserve regional farmland, improve local food security, support fair and resilient food systems and reduce food waste. Dining services can support sustainable food systems by making low impact dining options available and by educating customers about more sustainable options. This section covers meatless dining, and sustainable food and beverage purchasing and practices.

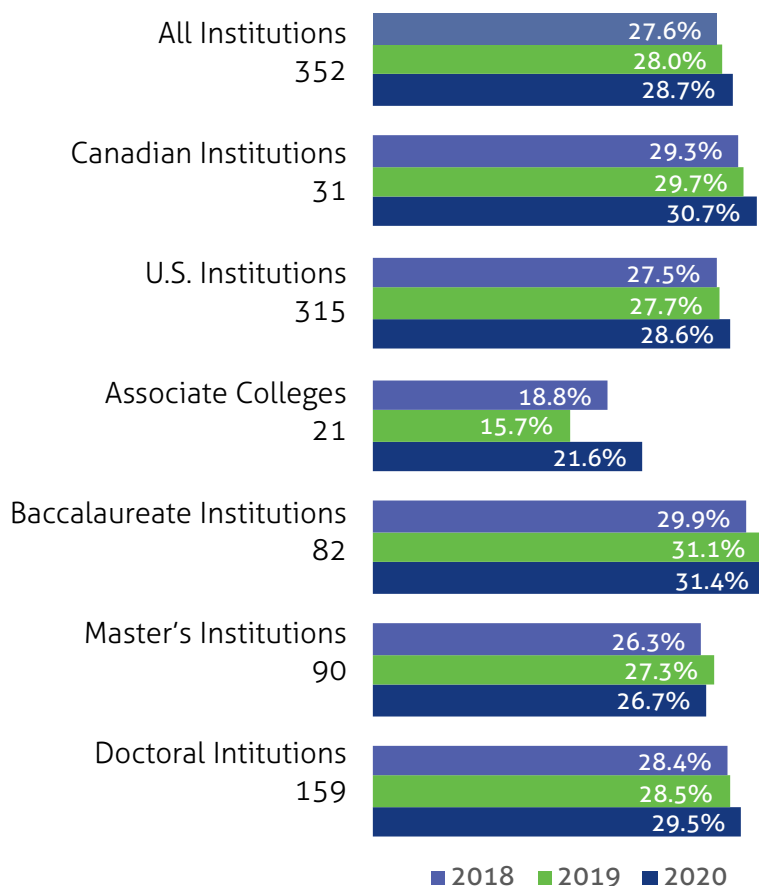


Food & Dining

Top Performers

Rank	Institution	Score	Type	Location
1	University of Winnipeg	89.0%	Master's	Winnipeg, MB
2	University of Connecticut	70.6%	Doctoral	Storrs, CT
3	University College Cork - National University of Ireland, Cork	69.9%	Doctoral	Cork, Ireland
4	Columbia University	62.5%	Doctoral	New York, NY
5	Antioch College	62.3%	Baccalaureate	Yellow Springs, OH
6	Smith College	62.1%	Baccalaureate	Northampton, MA
7	University of Washington, Seattle	61.1%	Doctoral	Seattle, WA
8(t)	Eastern Connecticut State University	59.0%	Master's	Willimantic, CT
8(t)	Lafayette College	59.0%	Baccalaureate	Easton, PA
8(t)	Mohawk College	59.0%	Associate	Hamilton, ON

Average Scores





Grounds



A Top Performer in Grounds, Central New Mexico Community College's landscaping includes low-impact design and xeriscaping. Photo credit: Molly Blumhoefer

Beautiful and welcoming campus grounds can be planned, planted and maintained in any region while minimizing the use of toxic chemicals, protecting wildlife habitat, conserving resources and promoting organic care. This section covers campus land management, sustainable landscaping, and biodiversity of campus grounds and surrounding lands.



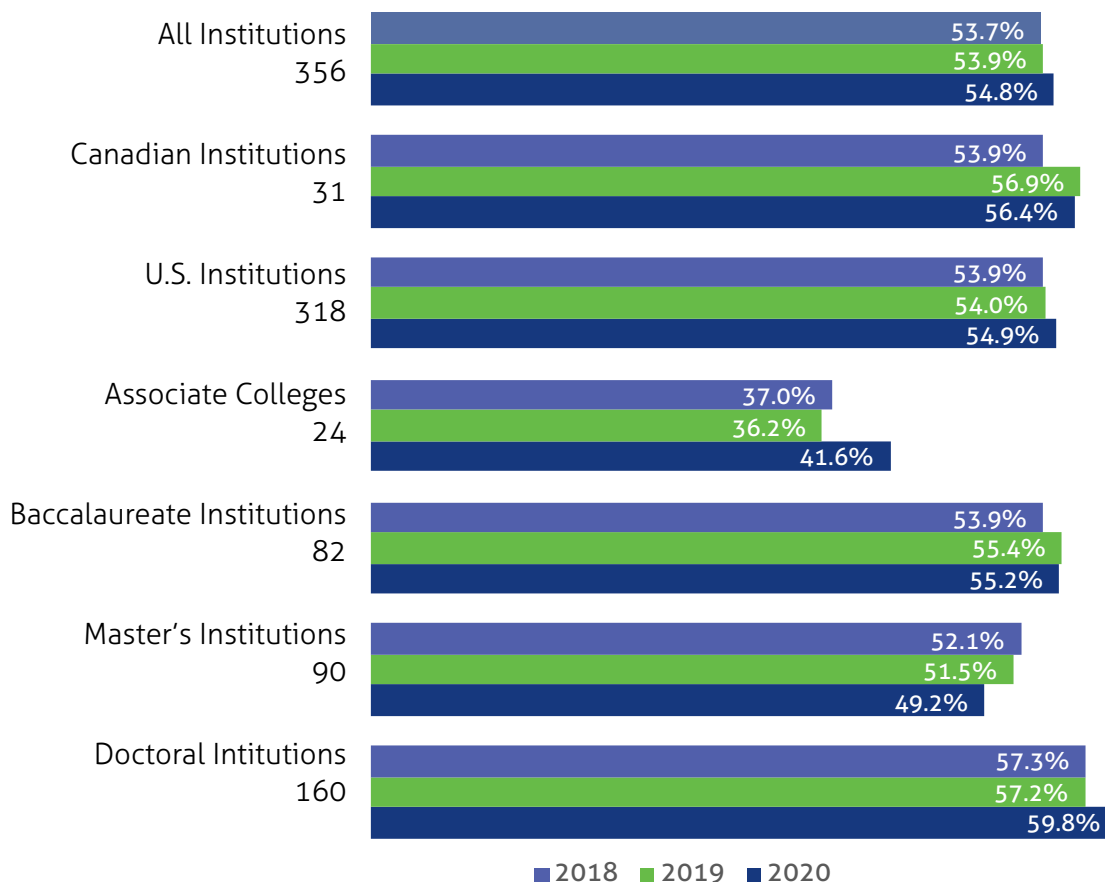
Grounds

Top Performers

Rank	Institution	Score	Type	Location
1(t)	Cascadia College	100.0%+	Associate	Bothell, WA
1(t)	Chatham University	100.0%+	Master's	Pittsburgh, PA
1(t)	George Washington University	100.0%+	Doctoral	Washington, DC
4(t)	Antioch College	100.0%	Baccalaureate	Yellow Springs, OH
4(t)	Central New Mexico Community College	100.0%	Associate	Albuquerque, NM
4(t)	College of the Atlantic	100.0%	Baccalaureate	Bar Harbor, ME
4(t)	Florida State University	100.0%	Doctoral	Tallahassee, FL
4(t)	Polytechnique Montreal	100.0%	Doctoral	Montreal, QC
4(t)	The American College of Greece	100.0%	Master's	Athens, Greece
4(t)	Universite de Montreal	100.0%	Doctoral	Montreal, QC
4(t)	University of Maine	100.0%	Doctoral	Orono, ME
4(t)	University of Saskatchewan	100.0%	Doctoral	Saskatoon, SK
4(t)	University of Wisconsin-Milwaukee	100.0%	Doctoral	Milwaukee, WI

Tiebreaks (+) were determined based on points earned in Exemplary Practice credits related to this impact area.

Average Scores





Investment & Finance



Barnard students head attend the 2019 NYC Climate Strike. In 2019, Barnard College published a Climate Science Guide for the responsible divestment of endowment funds away from fossil fuel companies that dispute climate science. See Institutional Highlight on [page 50](#). Photo credit: Jonathan King

Collectively, colleges and universities invest hundreds of billions of dollars, and the impacts from investments are both local and global in scope. Using transparent and democratic investment processes can improve the long-term health of institutional endowments, encourage better corporate behavior, support innovative product development and help build a more just and sustainable financial system. This section covers sustainable investment, committees for responsible investing and investment disclosure.

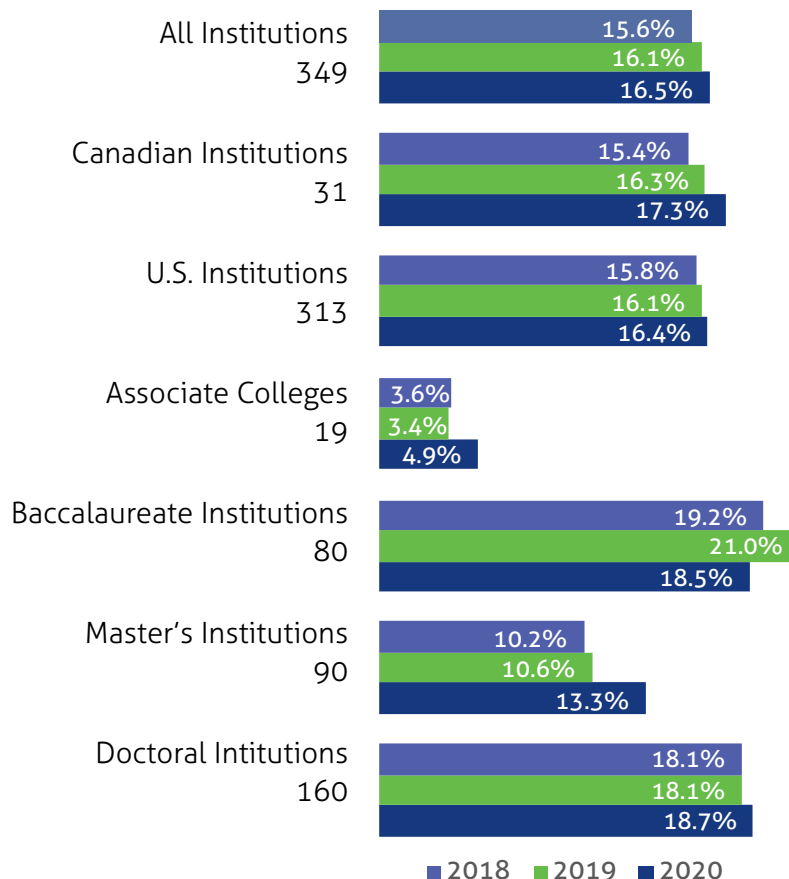


Investment & Finance

Top Performers

Rank	Institution	Score	Type	Location
1	Arizona State University	92.9%	Doctoral	Tempe, AZ
2	University College Cork - National University of Ireland, Cork	85.7%	Doctoral	Cork, Ireland
3	Warren Wilson College	83.3%	Baccalaureate	Swannanoa, NC
4	Hampshire College	81.6%	Baccalaureate	Amherst, MA
5	Chatham University	79.3%	Master's	Pittsburgh, PA
6(t)	University of California, Merced	74.1%	Doctoral	Merced, CA
6(t)	University of California, Santa Cruz	74.1%	Doctoral	Santa Cruz, CA
8(t)	Colorado State University	70.0%	Doctoral	Fort Collins, CO
8(t)	University of California, Davis	70.0%	Doctoral	Davis, CA
8(t)	University of California, Los Angeles	70.0%	Doctoral	Los Angeles, CA

Average Scores





Public Engagement



Indiana University-Purdue University Indianapolis (IUPUI) students volunteering during the IUPUI Day of Caring. IUPUI is a Top Performer under Public Engagement. Photo credit: Liz Kaye, IU Studios

Engagement in problem-solving with community members and organizations in the governmental, nonprofit and for-profit sectors encourages widespread solutions to sustainability challenges. Public engagement can help students develop leadership skills while deepening their understandings of practical, real-world problems and the process of creating solutions. This section covers community and inter-campus partnerships, continuing education, community service, public policy participation and trademark licensing.

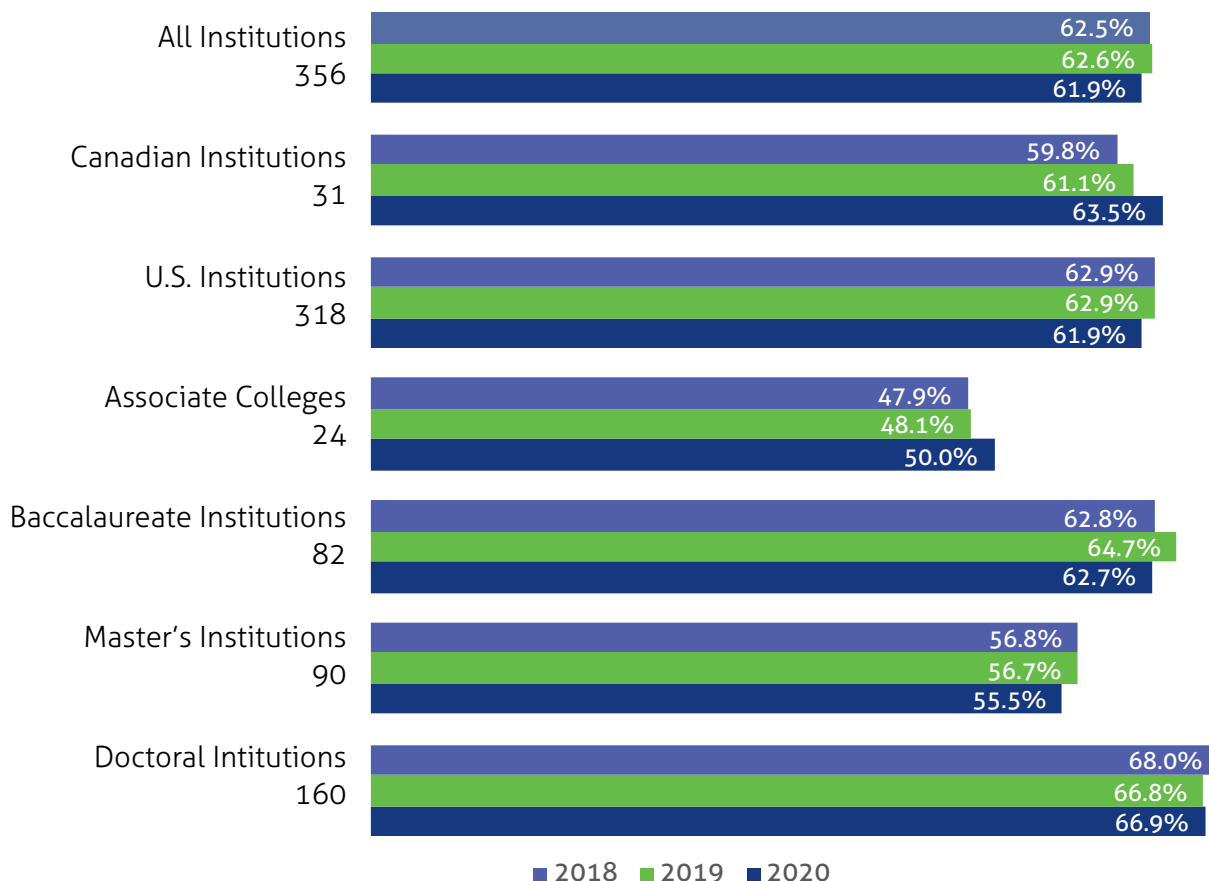


Public Engagement

Top Performers

Rank	Institution	Score	Type	Location
1	University of Connecticut	100%	Doctoral	Storrs, CT
2	Cornell University	97.3%	Doctoral	Ithaca, NY
3	Colorado State University	96.6%	Doctoral	Fort Collins, CO
4	SUNY College of Environmental Science and Forestry	96.2%	Doctoral	Syracuse, NY
5	Colby College	94.3%	Baccalaureate	Waterville, ME
6	Stanford University	94.3%	Doctoral	Stanford, CA
7	Indiana University-Purdue University Indianapolis	93.9%	Doctoral	Indianapolis, IN
8	Seattle University	93.8%	Master's	Seattle, WA
9	University of Georgia	93.7%	Doctoral	Athens, GA
10	Santa Clara University	93.6%	Doctoral	Santa Clara, CA

Average Scores





Purchasing



California State University, East Bay invested in reusable serveware for the campus community. The California State University system passed a system-wide policy in 2019 that applies to all 23 CSU campuses in banning the institutional purchase of all single-use plastics. See Institutional Highlight on [page 51](#). Photo credit: Garvin Tso

Collectively, institutions spend many billions of dollars on goods and services annually. Each purchasing decision represents an opportunity for institutions to choose environmentally and socially preferable products and services and support companies with strong commitments to sustainability. This section covers general and commodity-specific sustainable purchasing policies, life cycle cost analysis, and purchase of electronics, paper and cleaning products.

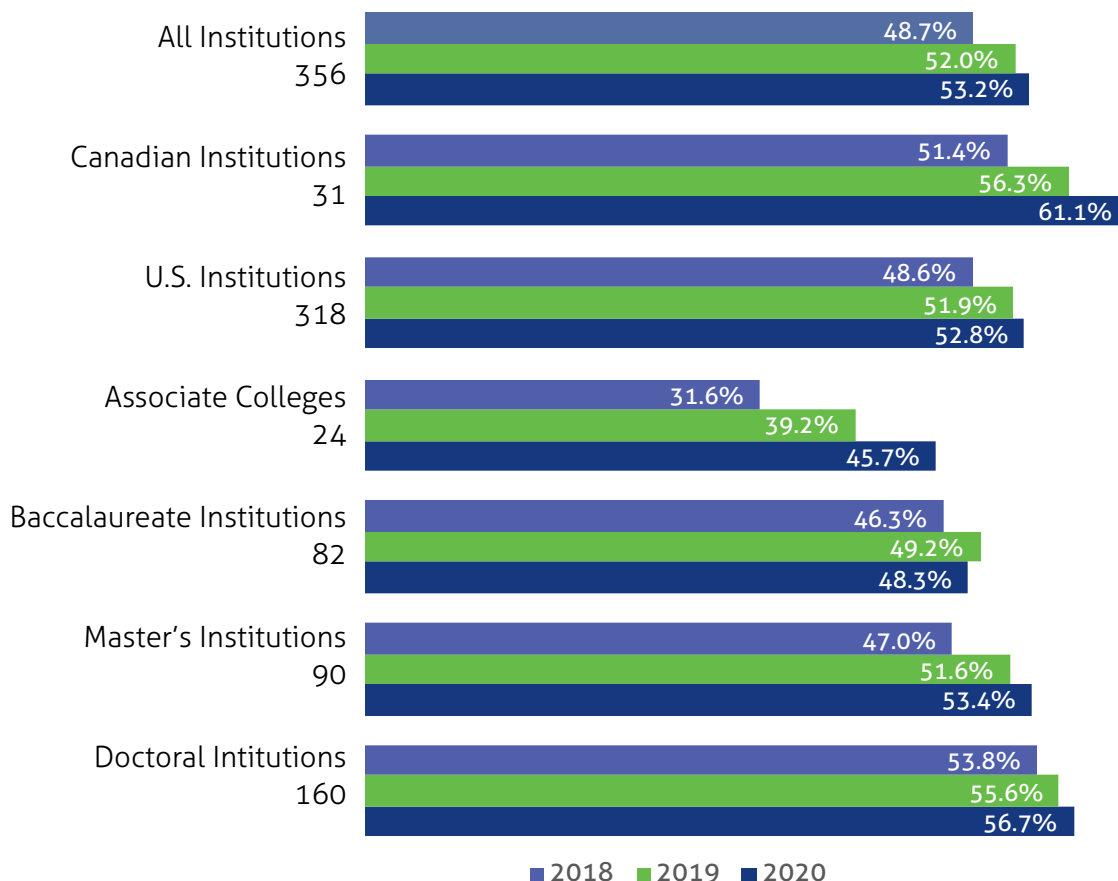


Purchasing

Top Performers

Rank	Institution	Score	Type	Location
1	Dalhousie University	99.0%	Doctoral	Halifax, NS
2	Macalester College	98.3%	Baccalaureate	Saint Paul, MN
3	Emory University	96.5%	Doctoral	Atlanta, GA
4	University of Ontario Institute of Technology	95.8%	Master's	Oshawa, ON
5	SUNY College of Environmental Science and Forestry	94.2%	Doctoral	Syracuse, NY
6	University of Dayton	92.3%	Doctoral	Dayton, OH
7	The American College of Greece	91.7%	Master's	Athens, Greece
8	Arizona State University	90.8%	Doctoral	Tempe, AZ
9	Berea College	90.0%	Baccalaureate	Berea, KY
10(t)	North Seattle College	89.8%	Associate	Seattle, WA
10(t)	University of Calgary	89.8%	Doctoral	Calgary, AB

Average Scores





Research



Students discuss findings at Binghamton University's annual Research Days poster session. Binghamton University is a Top Performer under Research. Photo credit: Jonathan Cohen

By researching sustainability issues and refining theories and concepts, higher education institutions can continue to help the world understand sustainability challenges and develop new technologies, strategies and approaches to address those challenges. This section covers faculty and department sustainability research and initiatives for open access research.



Research

Top Performers

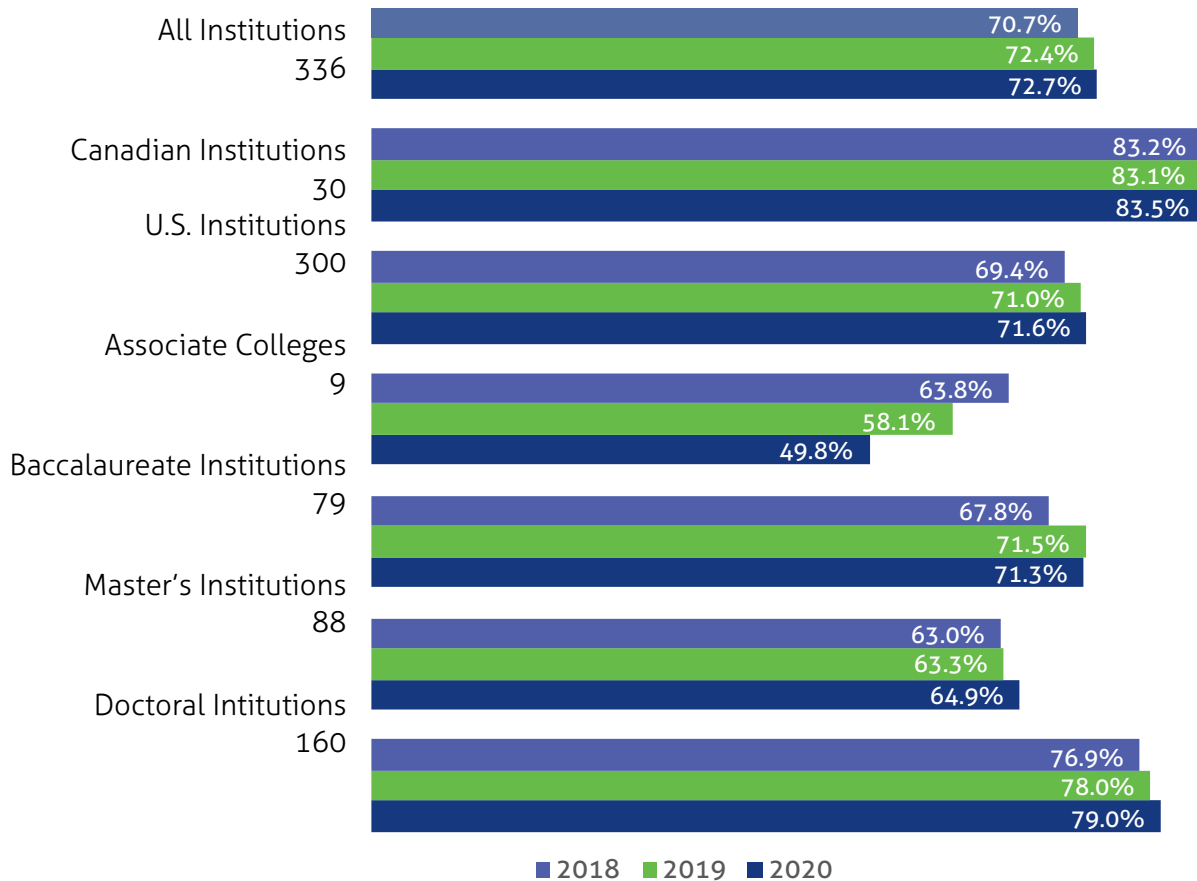
Rank	Institution	Score	Type	Location
1(t)	Binghamton University	100.0%+	Doctoral	Vestal, NY
1(t)	Florida State University	100.0%+	Doctoral	Tallahassee, FL
1(t)	University of California, Irvine	100.0%+	Doctoral	Irvine, CA
1(t)	University of California, Merced	100.0%+	Doctoral	Merced, CA
1(t)	University of California, San Diego	100.0%+	Doctoral	La Jolla, CA
6(t)	Carnegie Mellon University	100.0%	Doctoral	Pittsburgh, PA
6(t)	Colorado State University	100.0%	Doctoral	Fort Collins, CO
6(t)	Cornell University	100.0%	Doctoral	Ithaca, NY
6(t)	Dickinson College	100.0%	Baccalaureate	Carlisle, PA
6(t)	Furman University	100.0%	Baccalaureate	Greenville, SC
6(t)	Portland State University	100.0%	Doctoral	Portland, OR
6(t)	Rice University	100.0%	Doctoral	Houston, TX
6(t)	Santa Clara University	100.0%	Doctoral	Santa Clara, CA
6(t)	Simon Fraser University	100.0%	Doctoral	Burnaby, BC
6(t)	SUNY College of Environmental Science and Forestry	100.0%	Doctoral	Syracuse, NY
6(t)	Texas A&M University	100.0%	Doctoral	College Station, TX
6(t)	Universite Laval	100.0%	Doctoral	Quebec City, QC
6(t)	University of Alberta	100.0%	Doctoral	Edmonton, AB
6(t)	University of Calgary	100.0%	Doctoral	Calgary, AB
6(t)	University of California, Santa Cruz	100.0%	Doctoral	Santa Cruz, CA
6(t)	University of Connecticut	100.0%	Doctoral	Storrs, CT
6(t)	University of Dayton	100.0%	Doctoral	Dayton, OH
6(t)	University of Manitoba	100.0%	Doctoral	Winnipeg, MB
6(t)	University of Massachusetts Amherst	100.0%	Doctoral	Amherst, MA
6(t)	University of Minnesota, Duluth	100.0%	Master's	Duluth, MN
6(t)	University of New Hampshire	100.0%	Doctoral	Durham, NH
6(t)	University of North Carolina at Chapel Hill	100.0%	Doctoral	Chapel Hill, NC

Tiebreaks (+) were determined based on points earned in Exemplary Practice credits related to this impact area.



Research

Average Scores



A Portland State University researcher climbs a tree in the early morning to collect samples. Portland State University is a Top Performer under Research. Photo credit: Zach Putnam





Transportation



Locksmith Shop Electric Vehicle at Stevens Institute of Technology, a Top Performer under Transportation. Photo credit: Sarah Gilly

Institutions can positively impact human and ecological health and support local economies by modeling sustainable transportation systems. Transportation-related emissions and pollutants contribute to health problems which, due to disproportionate exposure, are frequently more pronounced in low-income communities near major transportation corridors. In addition, fuel extraction, production and distribution can damage environmentally and culturally significant ecosystems and may financially benefit oppressive governments. This section covers campus fleets, student/employee modal split and programs promoting sustainable transportation.

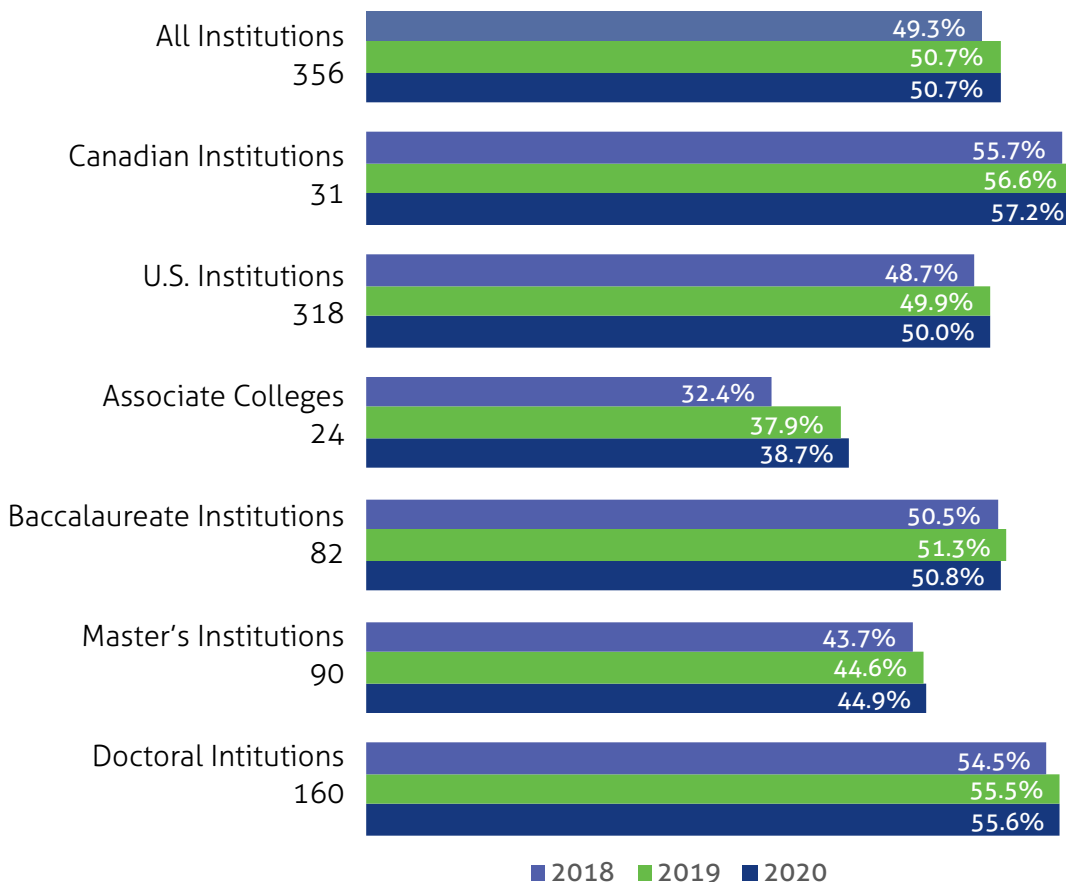


Transportation

Top Performers

Rank	Institution	Score	Type	Location
1	Columbia University	89.1%	Doctoral	New York, NY
2	University of Washington, Seattle	87.6%	Doctoral	Seattle, WA
3	Concordia University	81.6%	Doctoral	Montreal, QC
4	New York University	81.4%	Doctoral	New York, NY
5	University of Pennsylvania	80.6%	Doctoral	Philadelphia, PA
6	Emerson College	80.3%	Master's	Boston, MA
7	Massachusetts Institute of Technology	79.7%	Doctoral	Cambridge, MA
8	Stevens Institute of Technology	78.7%	Doctoral	Hoboken, NJ
9	University of Ottawa	78.3%	Doctoral	Ottawa, ON
10	Colorado College	78.1%	Baccalaureate	Colorado Springs, CO

Average Scores





Waste



Volunteers at the “We All Live Here” campus clean-up day at Aquinas College, a Top Performer under Waste. Photo credit: Jessica Eimer Bowen

Waste reduction mitigates the need to extract virgin materials from the earth and reduces waste flow to incinerators and landfills that contaminate air and water, produce greenhouse gas emissions and tend to have disproportionate negative impacts on low-income communities. Source reduction and waste diversion also save institutions costly landfill and hauling costs. Campaigns for waste reduction can engage the entire campus community in contributing to tangible sustainability goals. This section recognizes waste minimization and reduction construction, waste diversion and hazardous waste management.

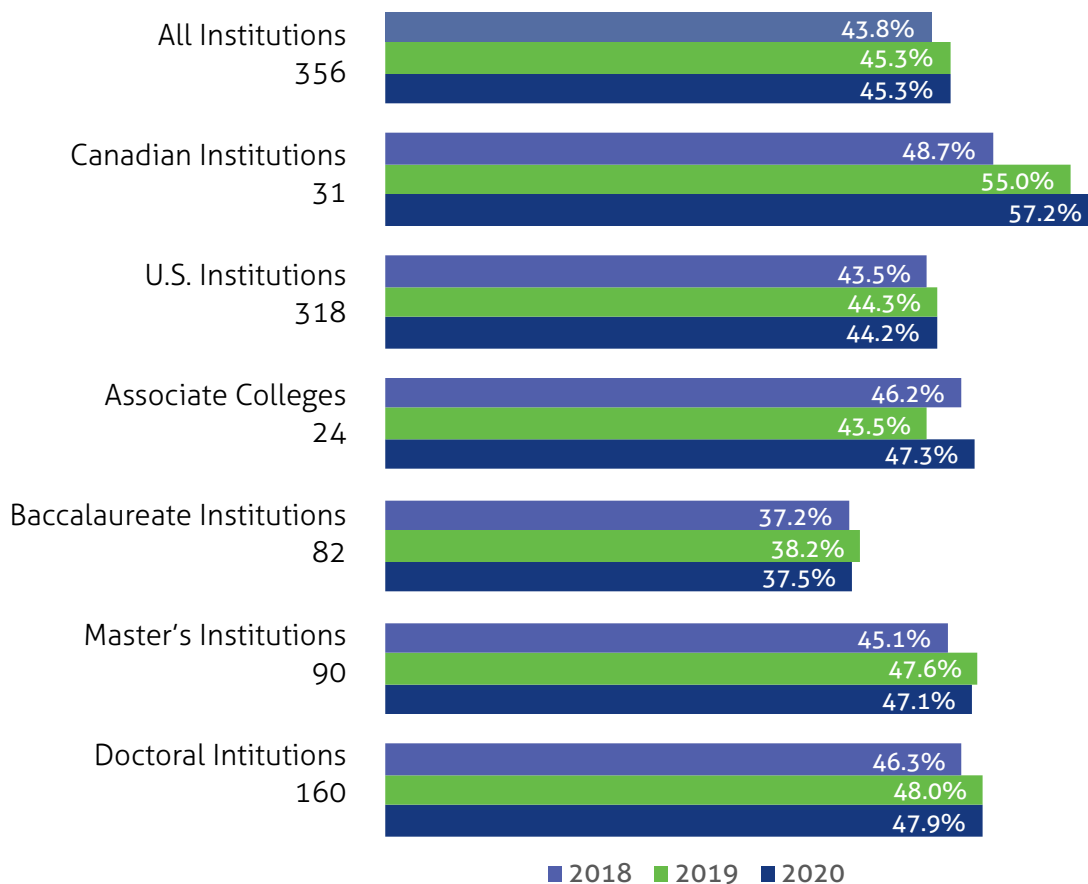


Waste

Top Performers

Rank	Institution	Score	Type	Location
1	Nova Scotia Community College	90.6%	Associate	Halifax, NS
2	Thompson Rivers University	87.6%	Master's	Kamloops, BC
3	Aquinas College	80.1%	Master's	Grand Rapids, MI
4	Universite Laval	79.3%	Doctoral	Quebec City, QC
5	University of Massachusetts Lowell	78.1%	Doctoral	Lowell, MA
6	University College Cork - National University of Ireland, Cork	76.6%	Doctoral	Cork, Ireland
7	California State University, Fullerton	76.2%	Doctoral	Fullerton, CA
8	University of California, Santa Barbara	75.8%	Doctoral	Santa Barbara, CA
9	University of California, Merced	74.3%	Doctoral	Merced, CA
10(t)	George Mason University	73.2%	Doctoral	Fairfax, VA
10(t)	University of Winnipeg	73.2%	Master's	Winnipeg, MB

Average Scores





Water



Aerial view of University of Wisconsin-Madison and the Wisconsin State Capitol, surrounded by Lake Mendota and Lake Monona. See Institutional Highlight on [page 65](#). Photo credit: Bryce Richter/UW-Madison

Water conservation and reuse, as well as effective rainwater management practices, are important in maintaining and protecting finite groundwater supplies. Pumping, delivering and treating water is a major driver of energy consumption, so institutions can help reduce energy use and the emissions associated with energy generation by conserving water. Water conservation and effective rainwater and wastewater management also reduce the need for effluent discharge into local surface water supplies, which helps improve the health of local water ecosystems. This section covers water use reduction and rainwater management.



Water

Top Performers

Rank	Institution	Score	Type	Location
1(t)	Colorado College	100.0%+	Baccalaureate	Colorado Springs, CO
1(t)	San Francisco State University	100.0%+	Doctoral	San Francisco, CA
1(t)	University of Connecticut	100.0%+	Doctoral	Storrs, CT
4(t)	California State University, Northridge	100.0%	Master's	Northridge, CA
4(t)	Central New Mexico Community College	100.0%	Associate	Albuquerque, NM
4(t)	Chatham University	100.0%	Master's	Pittsburgh, PA
4(t)	Colgate University	100.0%	Baccalaureate	Hamilton, NY
4(t)	Eastern Kentucky University	100.0%	Master's	Richmond, KY
4(t)	George Mason University	100.0%	Doctoral	Fairfax, VA
4(t)	Muhlenberg College	100.0%	Baccalaureate	Allentown, PA
4(t)	Northwestern University	100.0%	Doctoral	Evanston, IL
4(t)	Raritan Valley Community College	100.0%	Associate	Branchburg, NJ
4(t)	Stanford University	100.0%	Doctoral	Stanford, CA
4(t)	Stevens Institute of Technology	100.0%	Doctoral	Hoboken, NJ
4(t)	Tennessee Technological University	100.0%	Doctoral	Cookeville, TN
4(t)	Universite Laval	100.0%	Doctoral	Quebec City, QC
4(t)	University of Maryland, Baltimore County	100.0%	Doctoral	Baltimore, MD
4(t)	University of Minnesota, Morris	100.0%	Baccalaureate	Morris, MN
4(t)	University of Texas Rio Grande Valley	100.0%	Doctoral	Edinburg, TX
4(t)	Vassar College	100.0%	Baccalaureate	Poughkeepsie, NY

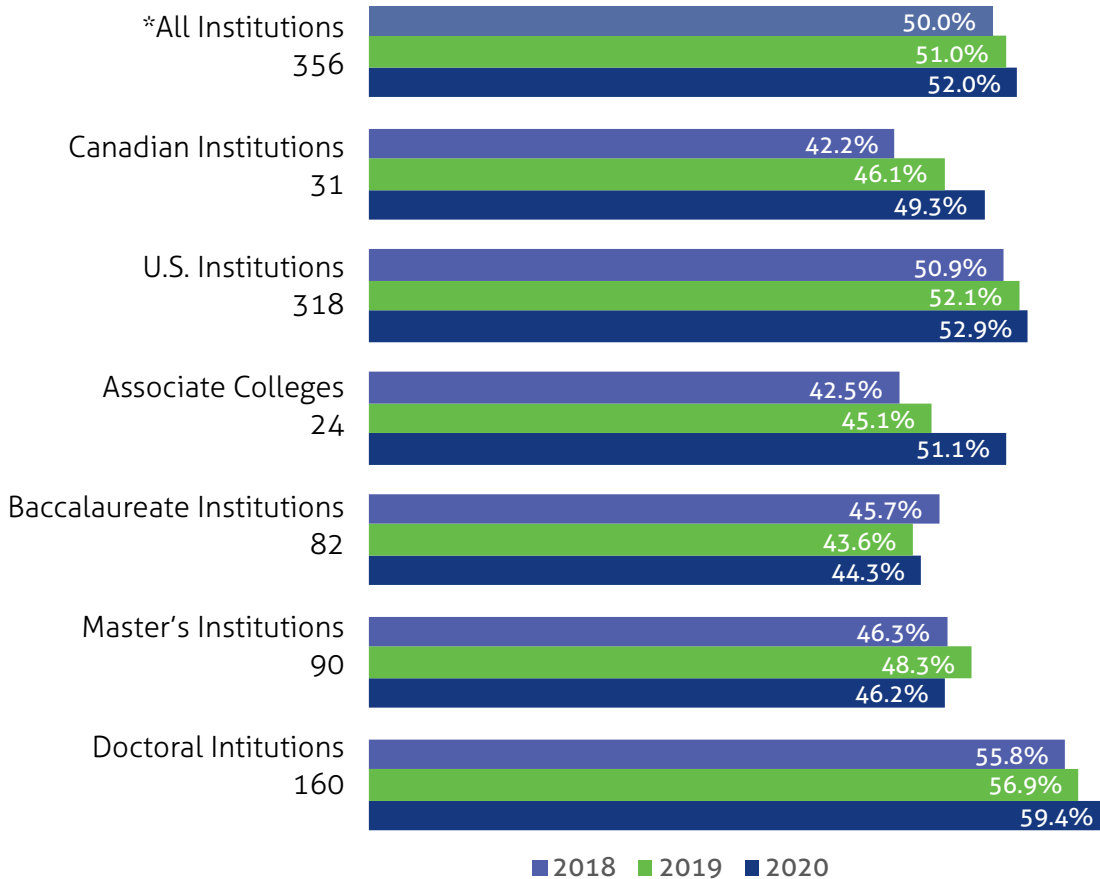
Natural Resources students participate in a stream ecology course at Colorado State University Mountain Campus. Photo credit: Colorado State University Photography





Water

Average Scores



The Tennessee Tech intramural facility features pervious pavement and an underground stormwater management system below the volleyball court. Photo credit: Tennessee Technological University





Wellbeing & Work



Bike to Work Day at Santa Clara University, a Top Performer under Wellbeing & Work. Photo credit: Cara Uy, Center for Sustainability, Santa Clara University

An organization's character, capacity to perform and achievements are only as strong as that organization's community. Colleges and universities can bolster the strength of their communities by promoting the wellbeing of the campus community and by offering worker benefits, wages and other assistance that serve to respectfully and ethically compensate workers. This section recognizes student and employee wellness programs and employee compensation, satisfaction, health and safety.

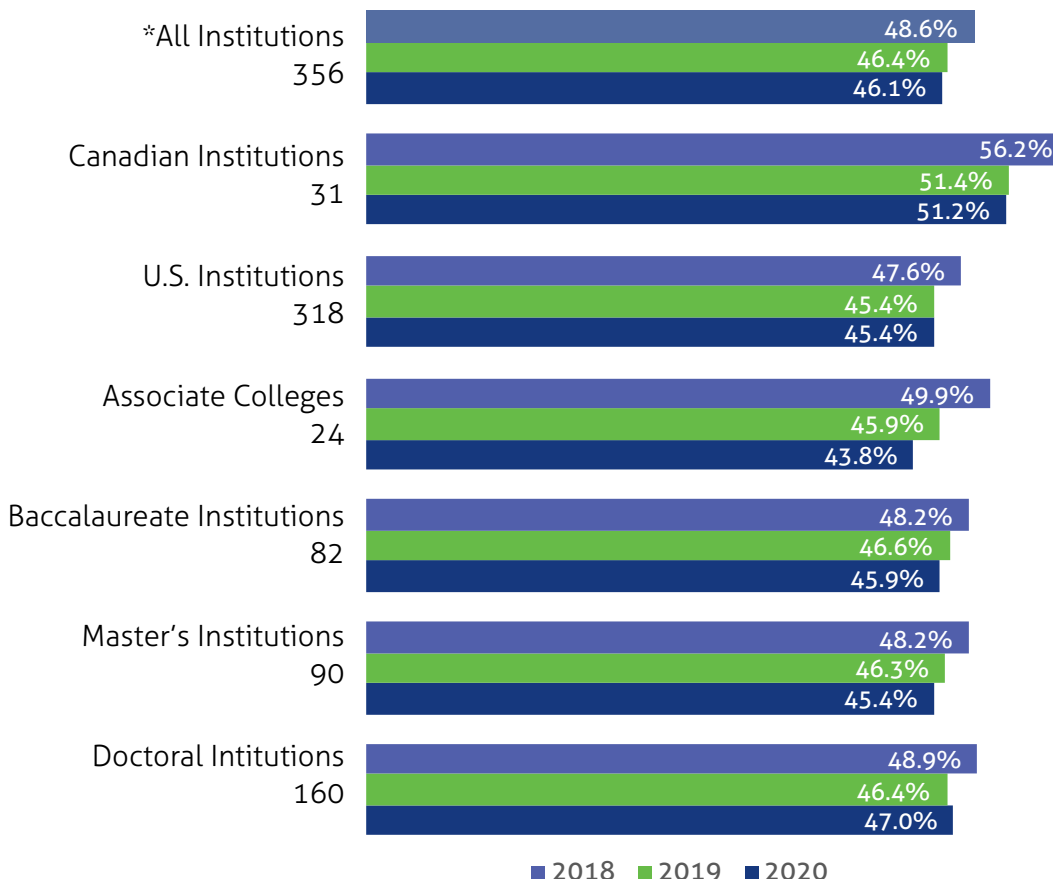


Wellbeing & Work

Top Performers

Rank	Institution	Score	Type	Location
1	University of Massachusetts Lowell	90.0%	Doctoral	Lowell, MA
2	Universite Laval	89.4%	Doctoral	Quebec City, QC
3	Stanford University	86.7%	Doctoral	Stanford, CA
4	University of California, Los Angeles	84.3%	Doctoral	Los Angeles, CA
5	Colorado State University	81.7%	Doctoral	Fort Collins, CO
6	Barnard College	80.7%	Baccalaureate	New York, NY
7	Santa Clara University	79.7%	Doctoral	Santa Clara, CA
8	The American College of Greece	78.3%	Master's	Athens, Greece
9	Middlebury College	78.1%	Baccalaureate	Middlebury, VT
10	Polytechnique Montreal	78.0%	Doctoral	Montreal, QC

Average Scores



Overall Top Performers

Highest overall scores among Associate, Baccalaureate, Master's, and Doctoral institutions

Members of the campus community utilize green space at Universite Laval, an Overall Top Performer under the Doctoral category. Photo credit: Universite Laval



Associate Colleges

Top Performers

Rank	Institution	Score	Rating	Location
1	Nova Scotia Community College	71.1	Gold	Halifax, NS
2	Mohawk College	67.5	Gold	Hamilton, ON
3	Fleming College	66.3	Gold	Peterborough, ON
4	Portland Community College	62.0	Silver	Portland, OR
5	North Seattle College	60.0	Silver	Seattle, WA
6	Raritan Valley Community College	59.7	Silver	Branchburg, NJ
7	Central Community College	59.4	Silver	Grand Island, NE
8	Central New Mexico Community College	55.9	Silver	Albuquerque, NM
9	Delta College	54.9	Silver	University Center, MI
10	Western Technical College	52.1	Silver	La Crosse, Wisconsin

Rick Hansen announcing the Rick Hansen Foundation Accessibility Certification™ Program (RHFAC) at Nova Scotia Community College. Photo credit: Matt Madden



Baccalaureate Institutions

Top Performers

Rank	Institution	Score	Rating	Location
1	Colby College	83.2	Gold	Waterville, ME
2	Dickinson College	81.4	Gold	Carlisle, PA
3	Middlebury College	77.6	Gold	Middlebury, VT
4	College of the Atlantic	73.3	Gold	Bar Harbor, ME
5	Oberlin College	73.1	Gold	Oberlin, OH
6	University of Minnesota, Morris	73.0	Gold	Morris, MN
7	Colgate University	72.19	Gold	Hamilton, NY
8	Luther College	72.17	Gold	Decorah, IA
9	Furman University	71.7	Gold	Greenville, SC
10	Humber College	70.9	Gold	Toronto, ON

Humber College Interactive Art installation assemblage led by Toronto-based environmental artist Anya Mielniczek. Photo credit: Humber College



Master's Institutions

Top Performers

Rank	Institution	Score	Rating	Location
1	Thompson Rivers University	88.3	Platinum	Kamloops, BC
2	Chatham University	81.3	Gold	Pittsburgh, PA
3	Seattle University	75.6	Gold	Seattle, WA
4	Loyola Marymount University	74.7	Gold	Los Angeles, CA
5	California State University, Northridge	74.33	Gold	Northridge, CA
6	University of Colorado Colorado Springs	74.27	Gold	Colorado Springs, CO
7	Appalachian State University	73.9	Gold	Boone, NC
8	California State University, Chico	73.4	Gold	Chico, CA
9	Bentley University	72.6	Gold	Waltham, MA
10	San Jose State University	71.9	Gold	San Jose, CA

Sustainable transportation at Loyola Marymount University. Photo credit: Loyola Marymount University



Doctoral Institutions

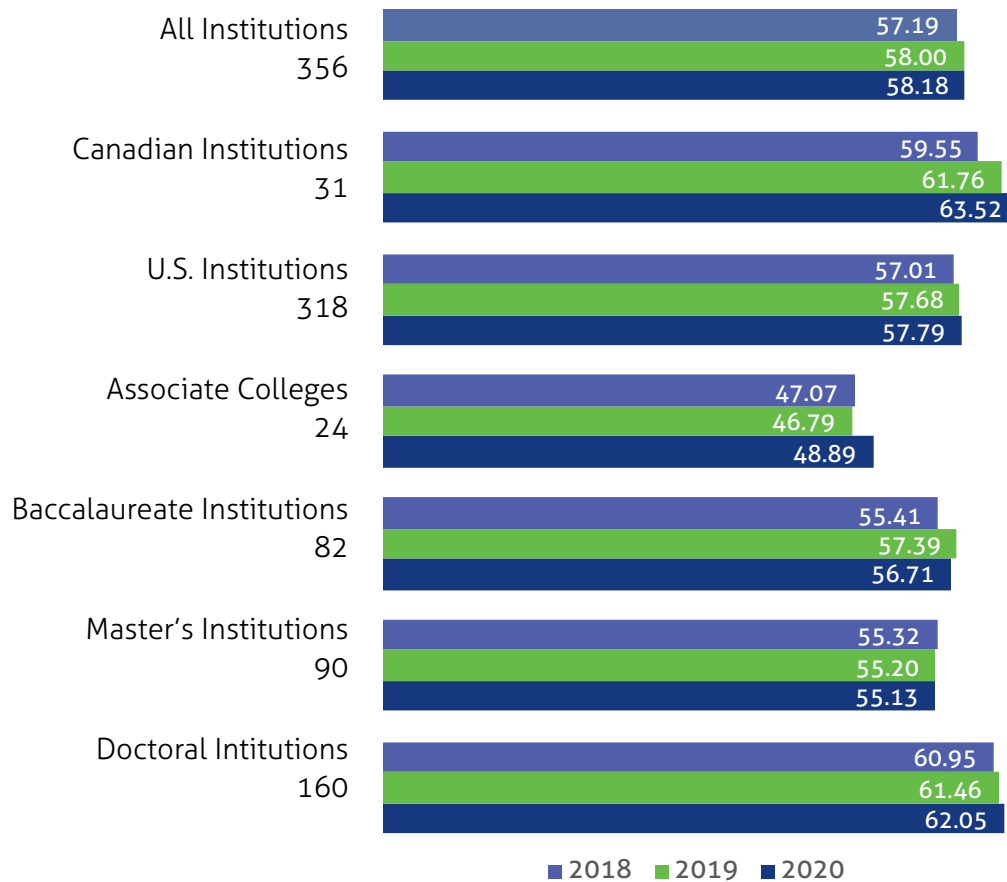
Top Performers

Rank	Institution	Score	Rating	Location
1	Colorado State University	88.1	Platinum	Fort Collins, CO
2	Stanford University	88.0	Platinum	Stanford, CA
3	Arizona State University	87.1	Platinum	Tempe, AZ
4	University of California, Irvine	86.8	Platinum	Irvine, CA
5	University of Connecticut	86.01	Platinum	Storrs, CT
6	University of New Hampshire	86.00	Platinum	Durham, NH
7	Cornell University	85.05	Platinum	Ithaca, NY
8	Universite Laval	84.99	Gold	Quebec City, QC
9	University of California, Merced	83.8	Gold	Merced, CA
10	SUNY College of Environmental Science and Forestry	81.7	Gold	Syracuse, NY

Colorado State Eco Leaders and Dining Services serve Colorado Harvest dishes made with local ingredients to students in the Corbett Hall community kitchen. Photo credit: Colorado State University Photography



Overall Average Scores



Energy workers observe hot air balloons in the Albuquerque sky at the Central New Mexico Community College Westside Campus solar array & energy storage system. Photo credit: Molly Blumhoefer



Institutional Highlights

Innovative and high-impact projects, programs and initiatives from STARS reports submitted in 2019-2020.

University of Massachusetts Amherst Clean Energy Corps student presents findings. See Institutional Highlight on [page 62](#). Photo credit: Ben Barnhart



Institutional Highlights

Antiracist Research & Policy Center -

The [Antiracist Research & Policy Center](#) (ARPC) at [American University](#) generates scholarly research, educational tools, and policy analysis geared towards dismantling racism in its many forms. Center staff and scholars work on multidisciplinary initiatives for fostering racial justice by forging relationships across the university, the D.C. region and beyond. The center's work includes a Faculty Affiliates program with eight thematic areas: Arts and Literature, Borders and Immigration, Civil Rights and Resistance Movements, Criminal Justice and Social Policy, Education, Inequality and Internationalism, Health and Environment, and Markets and Media. The center organizes events that put antiracist change agents in conversation and engages members of the public.



Staff members and students involved in antiracism work at the AU Antiracist Research & Policy Center. Photo credit: Tamara Darden

The Impact Clinic - The Impact Clinic at [Appalachian State University](#) is an applied learning initiative that partners teams of faculty and students with local business representatives to measure and manage businesses' environmental and societal impacts. The teams utilize a B Impact Assessment Tool to evaluate how the business' operations impact all stakeholders, including owners, consumers, workers, the local community, and the natural environment. Students participating in the clinic further their knowledge of sustainable practices, apply classroom learning to real-world issues, and often earn internships with the businesses upon graduation. Looking forward, the clinic is primed to partner with other North Carolina universities.



The Impact Clinic at Appalachian State University. Photo credit: Marie Freeman

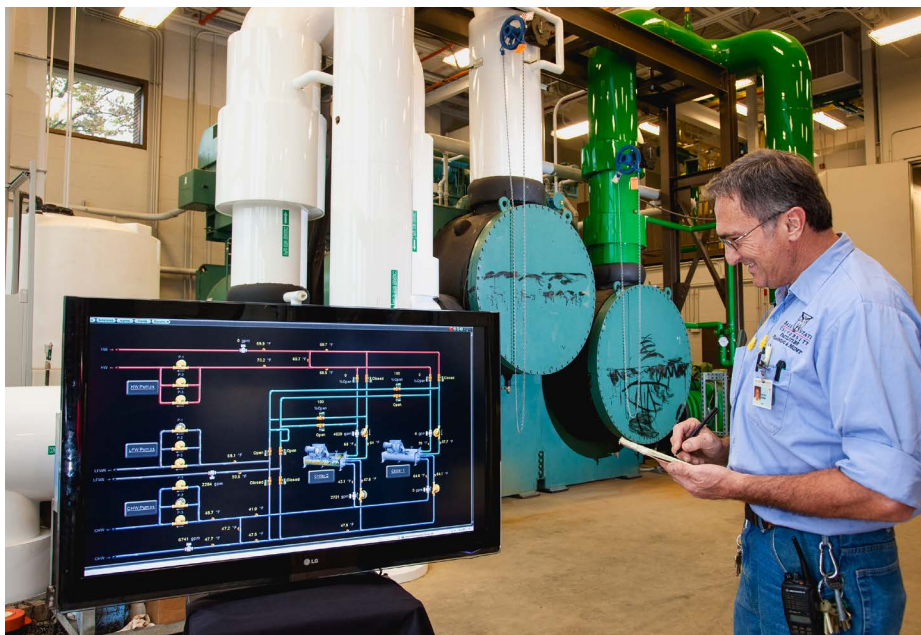
Institutional Highlights

ASU Solar - The [solar program](#) at [Arizona State University](#) has over 50 MWdc equivalent of combined solar generating capacity from both on-site and off-site installations. More than half of total capacity is generated through the [ASU Red Rock Solar Project](#), a collaboration between ASU and Arizona Public Service (APS). The remaining capacity comes from 90 solar installations with over 83,000 PV panels spread across four campus locations and the ASU Research Park. ASU installed three large-scale PowerParasol™ canopies that provide pedestrian and event shade while generating electricity, thereby reducing the urban heat island, extending usable space on campus, and offering experiential learning and research opportunities. Solar installations on campus also provide nearly 6,000 shaded parking spaces and shaded seating in the softball stadium.



ASU Solar. Photo credit: Arizona State University Digital Marketing Manager

Geothermal Energy System - [Ball State University](#)'s geothermal conversion project replaced the university's now decommissioned coal-fired boilers and chilled water equipment with the nation's largest ground-source geothermal district energy system. This system simultaneously produces hot water and chilled water. Major features of the installation include two district energy stations at opposite ends of the campus, 3,600 boreholes located across 25 acres that are drilled to depths of 400 to 500 feet each, an extensive hot and cold water distribution loop, and new interfaces for buildings. This project provided thousands of direct and indirect jobs, has halved the campus carbon footprint, and is saving approximately \$2 million annually.



Geothermal pipes and monitoring screen in the north station. Photo credit: Ball State University

Institutional Highlights

Climate Science List - In 2019, [Barnard College](#) published a [Climate Science List](#), a 490-page reference guide for the responsible divestment of endowment funds away from fossil fuel companies that dispute climate science. The List was developed by Barnard faculty, students, and staff in partnership with Fossil Free Indexes and the Union of Concerned Sciences, and evaluates 30 of the largest publicly traded fossil fuel companies using six criteria to indicate the extent to which a company's words and actions support climate science, demonstrate an urgency to act, support the free flow of information, and provide transparency about their actions. This is a publicly available resource that other institutions can use to make similar considerations for their endowment investments.



Barnard community members gathered to spell out "1.5° C", the global average temperature increase that scientists agree humans should strive to remain below in order to prevent disastrous climate change. Photo credit: Jonathan King

Large-scale Solar Farm and Laboratory - The recently completed 4.5 megawatt [Gold Tree Solar Farm](#) at [California Polytechnic State University](#) is currently the largest solar array in the CSU system, generating nearly 25 percent of Cal Poly's total electricity needs. In addition to saving \$17 million annually in utilities, the project is financing construction of a new laboratory and supporting academic partnerships. During the solar project's RFP process, academic departments were engaged to identify programmatic needs and opportunities for integration. These negotiations resulted in an academic agreement and the creation of an engineering and microgrid teaching laboratory. The lab will be used to teach engineering design fundamentals and advanced energy storage and microgrid applications.



Sheep grazing at the Cal Poly Gold Tree Solar site. Photo credit: Tony Tran

Institutional Highlights

System-wide Single-use Plastics Policy

- The California State University system passed a new [system-wide policy](#) in 2019 that applies to all 23 CSU campuses in banning the institutional purchase of all single-use plastics. Plastic straws and plastic bags are banned as of January 2019, and bans will go into effect for styrofoam by 2021 and plastic water bottles by 2023. These items are to be replaced by reusable, compostable, or recyclable ware, with exceptions made in compliance with the Americans with Disabilities Act. By centering waste reduction, this policy aims to also minimize the degradation of Pacific marine life. This policy is referenced by three CSU institutions that submitted reports in 2019-2020: [California State University, East Bay](#), [California State University, Channel Islands](#), and [San Jose State University](#).



CSU East Bay Sustainability Director Jillian Buckholz fills a reusable water bottle at a refilling station. Photo credit: Garvin Tso

Living Community Challenge Commitment

- [California State University, Monterey Bay](#) has demonstrated leadership in becoming the first higher education campus to commit to the Living Community Challenge, a master planning framework that incorporates regenerative design strategies. The Living Community Challenge is organized into seven performance areas (or petals), covering place, water, energy, health & happiness, materials, equity, and beauty. Each performance area includes requirements on topics such as agriculture on campus, human-powered mobility, and biophilic environments. The Living Community Challenge provides specific measurements on the “softer” aspects of building construction while providing aspirational targets that help meet commitments related to reduction of energy, waste and water.



CSU Monterey Bay implemented a pilot laundry to landscape project that included artwork depicting the interplay between water systems, the built environment and the natural environment. Photo credit: Lacey Raak, Noah Sforza

Institutional Highlights

e-Badges - Students at [Central Community College](#) can earn e-Badges to demonstrate skills and knowledge in environmental stewardship. e-Badge opportunities are available at no additional cost for all fields of study and for all learners, and are earned by demonstrating proficiencies in both knowledge and applied skills. Earned e-Badges also appear on student transcripts and can be referenced in student employment applications. The program offers e-Badges for Leadership in Environmental Stewardship, Problem Solving, Symbiosis, and Community Involvement. The e-Badge program launched in 2016 with six pilot courses. As of March 2020, 127 students were registered and 17 students have completed e-Badge requirements.



Maiden voyage for Central Community College Environmental Sustainability intern, Katy Ayers, on her eBadge project, the Myconoe, an 8' canoe grown from fungal mycelium. Photo credit: Megan Ayers

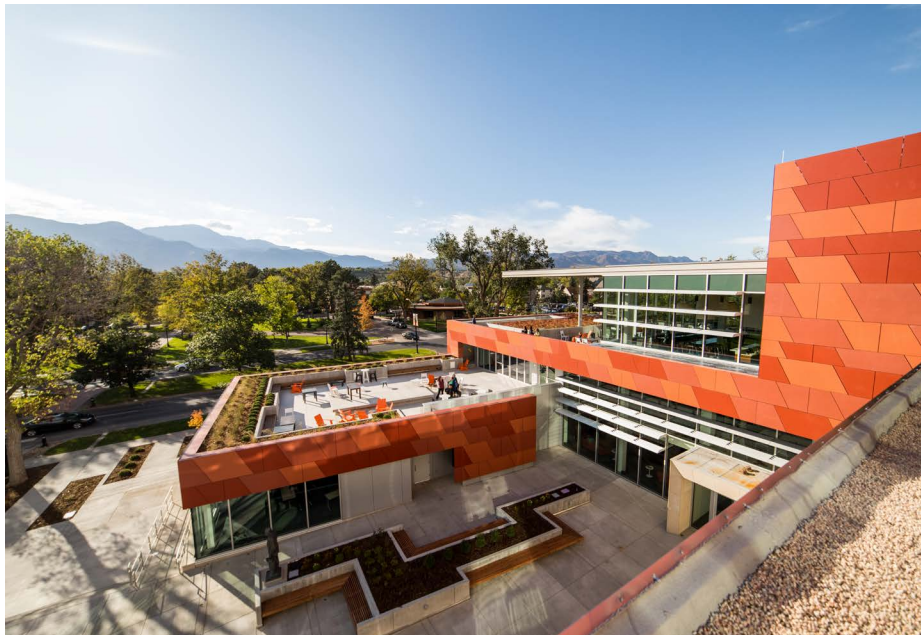
Living Lab Trail - In 2019, the [College of Lake County](#) inaugurated its 1.5-mile loop [Living Lab Trail](#) with interpretive signage across the campus and throughout its buildings. The purpose of the signage is to help campus visitors to appreciate what is involved with LEED certified buildings, geothermal heat exchange, solar PV, solar thermal, wetland and prairie restoration, bioswales, bicycle transportation options and ten dimensions of wellness. The signs connect sustainable campus features with opportunities to take similar actions at home or elsewhere in the community. They highlight similar actions taking place around the world, and connect sustainability features with educational and career opportunities.



Living Lab Trail tour at College of Lake County. Photo credit: Hillary Domke

Institutional Highlights

Carbon Neutral 2020 - [Colorado College](#) committed to carbon neutrality by 2020 in 2009 and has achieved that milestone this year. Through building renovations, adoption of 100% renewable energy on-site and locally, the construction of a net-zero energy/carbon library, and efficiency projects, the college has reduced on-site, scope 1 and 2 emissions by 75%, while also mitigating business travel and commuting, solid waste, waste water, and paper purchasing with investments in off-site projects that actively remove greenhouse gases from the atmosphere. Colorado College is located in a high carbon intensity electric grid, so renewable energy generation and use have significantly higher impacts within the region.



The Colorado College Net-Zero Energy/Carbon Tutt Library helped the college achieve the milestone of carbon neutrality on January 1, 2020. Photo credit: Jennifer Coombs

Ram Food Recovery Program - The [Ram Food Recovery Program](#) at [Colorado State University](#) aims to recover catered consumable food for distribution to food insecure community members. Advocacy among student leaders to address the issues of food insecurity and surplus food from catering events led to a working group that convened in 2019. The group found that changing campus policy was the best approach, and a guidelines and best practices document with a waiver was created. The program complies with safety standards and includes a timed notification system, making it possible for the university to support a food recovery program without assuming an unacceptable amount of liability. In summer 2019 alone, 52 food recovery opportunities were sent out, with average participation of 23 people per event.



Ram Food Recovery Program at Colorado State makes food leftover from catered events available to campus community members experiencing food insecurity. Photo credit: Colorado State University Photography

Institutional Highlights

ABC Framework for a Mentally Healthy Elon - In 2019, [Elon University](#) President Connie Ledoux Book announced that the university had adopted Act-Belong-Commit (ABC) as its framework to promote a campus-wide culture of holistic wellbeing and positive mental health. Developed in Western Australia, ABC helps to foster mentally healthy communities through three tenets: Act (do something); Belong (do something with somebody); and Commit (do something meaningful). Elon University is the first organization to implement the framework in the U.S., and the first university in the world to independently adopt it as the framework for a campus-wide wellness initiative. With several events having already taken place through the ABC framework, Elon is working to develop branding for the campaign and plans to host additional ABC trainings.

Sustainability in Prisons Project - The Sustainability in Prisons Project (SPP) is a partnership between [Evergreen State College](#) and the Washington State Department of Corrections, with a mission to empower sustainable change by bringing nature, science, and environmental education into prisons. The SPP's [Emergent Pre-Vegetated Mats Program](#) engages incarcerated individuals, prison staff, Evergreen staff, and other partners in growing native wetland plants in coconut fiber mats for wetland restoration. The inmate technicians assist in research related to the system's nutrient flow and input. In addition to providing inmate technicians with educational opportunities, skill development, career preparation, and reentry support, the program has made headway in restoring habitats for the federally threatened Oregon spotted frog.

Environmental & Social Innovation Program - The Environmental and Social Innovation Program at [George Washington University](#) provides GW students with an opportunity to research, design, and implement a project that addresses equity and justice related to environmental issues in the Washington, D.C. community. Students take a course titled "Community-Engaged Research to Promote Environmental Justice", where they research local issues and propose a project. Through grant programs including the Eco-Equity Challenge and DC Climathon, students design and implement their ideas with funding and mentoring support from GW faculty and staff. Research is conducted through a community asset-based approach and the program is sustained through community-based partnerships.

Elon University President Connie Ledoux Book discusses the importance of mental wellness at a two-day Mental Health Summit that marked the launch of the Act-Belong-Commit framework. Photo credit: Andrew Krech, Elon University



Institutional Highlights

NX Building Retrofit Project - Building NX at [Humber College](#) underwent a major retrofit to become one of the most energy-efficient buildings in North America, while also claiming the title of Canada's first retrofit to achieve Zero Carbon Building Design Certification from the Canada Green Building Council. The highly-insulated and airtight design was informed by the college's 20-year Integrated Energy Master Plan, with measures that reduce energy consumption by 70%, along with reductions in water consumption and greenhouse gas emissions. A new roof-mounted photovoltaic system generates approximately 31,500 kWh annually, and excess energy is fed into the campus central plant to be used by other buildings. The Building NX retrofit is seeking Passive House Certification.

Commercial Food Compost Program - [Indiana University-Purdue University Indianapolis](#) has an ongoing partnership with [Butler University](#) to employ a large waste hauler for food waste compost collection. Both universities leveraged their respective networks to add more organizations to the pick-up route. In 2016, proceeds from winning a [sustainability competition](#) were used to create a grant that trained and recruited additional campuses and businesses into the composting network. In addition to IUPUI and Butler, 10 other Indianapolis institutions and businesses are participating: Ivy Tech Culinary College, Indy Zoo, Duos, Patachou Restaurants & Prep Kitchen, Sunking Brewery, Burger Fuel, Allison Transmission, Rolls Royce, Raytheon, and Roche Diagnostics. In 2019, IUPUI was able to divert 29 tons of food waste compost from incinerators and landfills.

Humber College NX Building Deep Energy Retrofit. Photo credit: Doublespace Photography



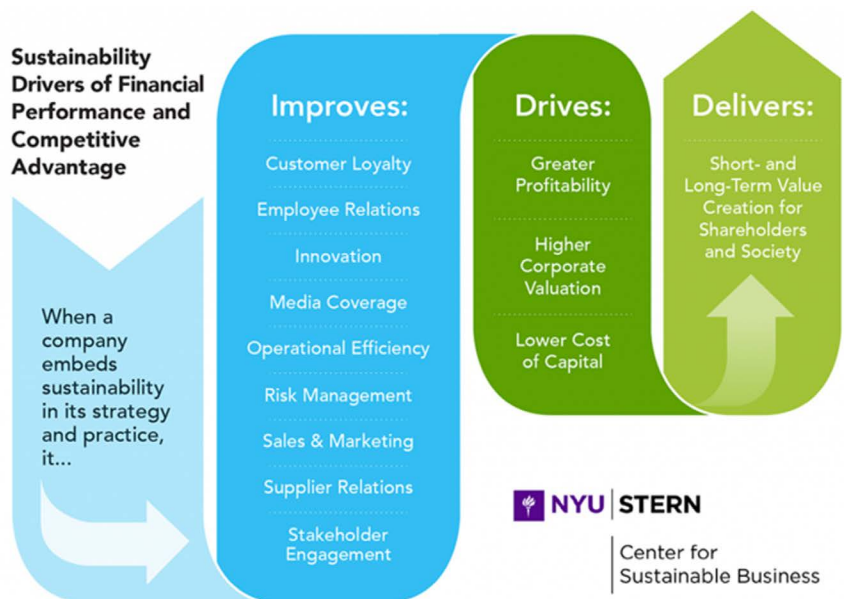
Institutional Highlights

Fossil Fuel Divestment - The Board of Trustees at [Lewis & Clark College](#) voted unanimously to divest from fossil fuel holdings in the endowment, passing a resolution in 2018 after multi-year conversations and study. The trustees affirmed that Lewis & Clark could simultaneously meet the critical objectives of best-in-class endowment management as well as environmental leadership. Lewis & Clark's [fossil fuel divestment policy](#) states that no new investments in any new fund with exposure to fossil fuel companies would be made, and over the next five years, exposure to fossil fuel companies held indirectly would be eliminated. The policy commits to engaging with investment managers to promote fossil fuel-free investment options, and annual updates to the broader campus community on fossil fuel holdings.



Student protest for fossil fuel divestment. Photo credit: LC Staff

Measuring Sustainable Business and Corporate Social Responsibility - In 2019, the [New York University](#) Stern School of Business's Center for Sustainable Business established two innovative ways of measuring sustainability among corporations. First, the [Sustainable Market Share](#) Index captures the sales of sustainability-marketed consumer products, revealing significant growth in the popularity of sustainable products over conventional counterparts within the past decade. The second tool is the [Return on Sustainable Investment](#) (ROSI) Methodology, which quantifies the material benefits and measurable savings for companies to pursue certain sustainability practices. Both initiatives have been recognized as innovative advancements in the realms of sustainable business and corporate social responsibility.



The ROSI methodology, developed by the Center for Sustainable Business at NYU Stern, provides a framework for quantifying the material benefits and savings for companies pursuing sustainability practices.

Institutional Highlights

Accessibility Training and Certification -

In 2018, [Nova Scotia Community College](#) partnered with the Rick Hansen Foundation (RHF) to offer an Accessibility Assessor training course, making NSCC one of the first two institutions in Canada to deliver this course. Participants were trained to evaluate a building's specific features in order to measure the overall level of meaningful access of a site for persons with physical, sensory, learning and developmental disabilities. NSCC enrolled two staff in the pilot program, and both have since received RHFAC Professional designation. In June 2019, the Ivany campus at [Nova Scotia Community College](#) was awarded a RHF Accessibility Certification, making it one of the first three sites in Nova Scotia to be certified.



Students of the Rick Hansen Foundation Accessibility Certification™ Program (RHFAC) at NSCC. Photo credit: Nova Scotia Community College

PolyCarbone Climate Activist Group - The PolyCarbone program was founded by a group of Engineering graduate students at [Polytechnique Montréal](#). Since 2017, PolyCarbone has helped the Polytechnique Montréal community fight climate change by organizing a number of programs and activities, including a vegetarian challenge (Défi végété), a zero food waste challenge (Défi zéro gaspi), a accompanying second-hand clothing campaign (#demarqueto). They are also working on a mobile application to support the adoption of more sustainable individual habits, a system of tradable carbon credits based on individual behavior changes, and more. The organization is currently working to expand its scope beyond the campus community to promote sustainable behavior and combat climate change across the province of Quebec.



Members of the PolyCarbone program. Photo credit: PolyCarbone – Polytechnique Montréal

Institutional Highlights

Housing Crisis Mitigation Plan - [San Jose State University](#) laid out a plan in January 2020 to address the housing crisis that affects SJSU students, faculty, and staff, due in part to the high cost of living in the region. The plan includes over \$3 million in grants for student housing insecurity and basic needs support from the California State University system, and the development of new housing for undergraduate and transfer students. In addition, the State of California transferred a surplus, obsolete building to SJSU, which will be used to develop up to 1,200 housing units for faculty and staff, graduate students, and students with families. Most units will be available at below market value.



Aerial view of San Jose State University. Photo credit: Javier Duarte

Wokini Initiative - The Wokini Initiative at [South Dakota State University](#) aims to increase the number of enrolled American Indian students, support their academic success, and boost their graduation rate. The groundwork for Wokini began in 2016 and a program director was hired in 2018. Successes to date include having hired an American Indian student recruiter, the establishment and awarding of numerous Wokini student scholarships, establishment of faculty and staff Wokini Challenge Grants, construction of a new American Indian Student Center, and cultural competence trainings for faculty, staff and researchers provided by the Wokini Office, American Indian Student Center and American Indian Studies program. The initiative is funded through SDSU's share of revenue from the South Dakota Permanent Trust Fund.



The Wokini Initiative supports American Indian students at SDSU. Photo credit: South Dakota State University

Institutional Highlights

Sustainable Eco-Recreation Project - The [Sustainable Eco-Recreation Project](#) at [Southern Illinois University Carbondale](#) aims to promote good water quality while providing novel forms of outdoor recreation. Student teams invented forms of recreation that aerate, cool, or manage nutrients to make lake waters healthier and more resistant to cyanobacterial harmful algal blooms. The design phase of the project involved three groups of engineering students developing in-lake solar fountains, pedal-powered fountains, and stationary bicycle-powered water flow through the wetlands, respectively. The program includes an interdisciplinary team of students, staff, and faculty across multiple departments and offices. A student-led committee secured funding for the project through the Student Green Fee.

Roadmap to Zero - In 2018, [Swarthmore College](#) convened a working group with representatives from Facilities, Sustainability, and other departments to develop the [Roadmap to Zero](#), an energy and utility master plan that will help the college realize its commitment to achieve carbon neutrality by 2035. Broadly, decarbonizing an energy system calls for three steps: deep energy efficiency; switching to zero-carbon electricity; and electrifying heating, cooling, and transportation. The master plan calls for construction of a new central plant and geexchange field, in addition to building system upgrades. This conversion of heating and cooling, combined with renewable electricity procurement, will cut scope 1 and scope 2 greenhouse gas emissions at Swarthmore by 98%.

Solar Community and Microgrid - In 2019, the [University of Alabama at Birmingham](#) opened its Urban Multisource Microgrid, a neighborhood that showcases [the UAB Surviv\(AL\) house](#) built for the 2017 US Department of Energy Solar Decathlon competition. The site features several retrofitted micro homes, a community garden, and renewable energy installations that power a microgrid completely independent from municipal electric utility. The demo site promotes the benefits of a microgrid system, such as carbon emission reduction, renewable energy generation, and holistic sustainable living principals. The site is managed by student and faculty researchers while also offering educational tours and STEM educational courses to all visitors, including children, homeowners, and energy professionals.

UAB Solar House. Photo credit: Hadley Turner



Institutional Highlights

Bike Friendly Platinum & Sustainable Fleet Certifications - [University of California, Davis](#) reaffirmed its Bicycle Friendly Platinum certification in 2017. Since initially going Platinum in 2013, UC Davis has removed outdated bike racks and placed 5,000 new models, given out thousands of free bike lights, expanded the vehicle traffic restriction zone, and made other improvements. UC Davis [promotes bicycling](#) by providing more than 30,000 bicycle parking spots, offering 24 daily parking permits per year for people who commit to commuting by bike but occasionally need to drive, and maintaining a large network of bike paths and bicycle-preferred roads. The UC Davis campus fleet is also one of the first institutions to earn [Sustainable Fleet Management certification](#) through the NAFA Fleet Management Certification.

Aligning Trademark Licensee Renewal with Social Performance - [University of California, Los Angeles](#) measures the performance of trademark licensees according to social sustainability metrics, and is using this information in trademark license renewal decisions. Using data on each licensee's ability to provide transparent, safe and fair workplaces and supply chains, UCLA reduced its licensee base by more than 50% with no loss of revenue. A qualified group of 145 companies have demonstrated the willingness and ability to develop management systems that meet UCLA's code of conduct standards. In 2020, UCLA Trademarks and Licensing is going beyond social sustainability with a new assessment, EcoVadis, that encompasses social and environmental sustainability, ethics, and sustainable procurement practices of licensees.

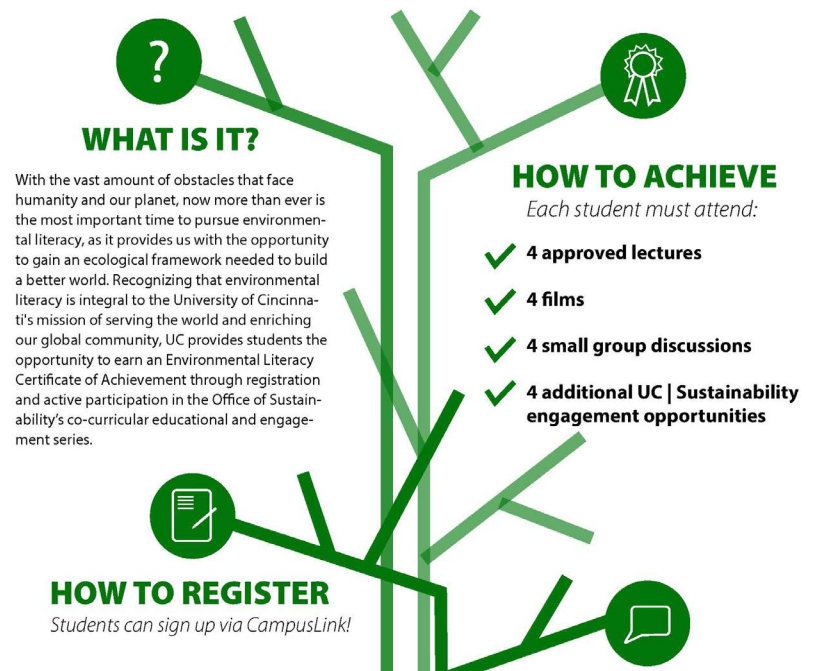
UCLA Students wearing licensed products. Photo credit: Hadley Turner



Institutional Highlights

Environmental Literacy Certificate

Program - The Office of Sustainability at [The University of Cincinnati](#) provides students the opportunity to earn an Environmental Literacy Certificate of Achievement through registration and active participation in the office's co-curricular educational events and programs. The certificate program equips students with foundational knowledge related to sustainability, ecological principles, and systems thinking through required attendance to at least four approved lectures, film screenings, small group discussions, and engagement opportunities. The co-curricular, not-for-credit certificate is free for all students, is completed outside of class, and can be completed anytime during a student's academic career.



Environmental Literacy Certificate of Achievement at University of Cincinnati.

Sustainable Dining Certifications -

[University of Connecticut](#) is among the first public universities in the US to achieve sustainable dining certification at [all of its campus dining halls](#). As of 2017, all eight residential dining units have earned two-star or three-star certifications through the Green Restaurant Association (GRA). The GRA Certified Green Restaurant designation recognizes facilities that meet standards in conserving energy and water, reducing food waste, reducing and recycling waste, and other measures. Notable features at UConn dining halls include a living wall of herbs; a food waste diversion partnership with a renewable energy digestion facility; LED lighting, vegetarian and vegan main dishes, locally sourced food, high efficiency sprayers, and renewable energy certificate (REC) products.



UConn dining composting in action. Photo credit: University of Connecticut

Institutional Highlights

Clean Energy Corps - The [Clean Energy Corps](#) at [University of Massachusetts Amherst](#) is a student-centered initiative within the [UMass Clean Energy Extension](#) (CEE) that annually trains and mobilizes students to work closely with Massachusetts municipalities, institutions and organizations, to help officials reduce emissions via building retrofits and comprehensive energy audits. As part of the Clean Energy Corps, several students conducted a greenhouse gas emissions inventory for the university's Mt. Ida Campus, evaluating clean energy opportunities for energy reductions through system controls, space management, energy efficiency measures, and renewable energy generation. The team engaged with staff from state energy agencies, NGOs, and utilities throughout the process, and produced findings and recommendations in a final report and presentation to the university.



Clean Energy Corps students review architectural plans at University of Massachusetts Amherst. Photo credit: Ben Barnhart

Protecting Pollinators - The [University of Minnesota, Duluth](#) passed a [student-written policy](#) in 2017 that supports pollinator-friendly practices and native plants in perpetuity, while halting the use of synthetic pesticides. Three students pioneered the passing of a "Pollinator Pledge", a one-page policy that ensures that the university continues its commitment to grounds stewardship and pollinator protection despite anticipated turnover of students or staff that have supported this cause. The process entailed proposing and passing a resolution through the Student Association, submitting it to the administration for consideration, then establishing an official policy. UMD is now working to educate the campus community about the policy and its impacts.



Wildflower planting across from UMN Duluth's Weber Music Hall. Photographer credit: UMPR

Institutional Highlights

New Audubon Campus Chapters - In 2019, students at the [University of Mississippi](#) and Rust College created the first two National Audubon Society [campus chapters](#) in the region. The UM and Rust College chapters have formed a unique partnership focused on fostering opportunities for inclusion in the field of conservation in the complex setting of Mississippi. The UM chapter seeks to create a more mindful, diverse, and bird-friendly community at the University of Mississippi and surrounding areas. Students from Rust College were invited to attend a UM Earth Day Keynote delivered by Dr. J. Drew Lanham, [board member](#) for the National Audubon Society and Clemson University professor, whose research focuses include the African-American role in natural-resources conservation.

The Grow Pod Project - Launched in 2018, the Grow Pod at [University of Oregon](#) is a shipping container built out for high-productivity food growth that supports ongoing research, learning, and innovation for sustainable urban food production on campus. The Pod is outfitted for growing plants with a heating and cooling system, insulation, trays and racks, and an LED lighting system. In the first year of the project, students raised garden crops and seedlings that they planned to market to the campus community. In the project's second year, the Pod is being used as an engagement tool in academic residential communities focusing on environmental leadership and Native American and Indigenous studies.

University of Oregon Growpod gardeners. Photo credit: Briana Meier



Institutional Highlights

College of Engineering Indigenous Peoples Initiatives Community - The College of Engineering at [University of Saskatchewan](#) launched the Engineering Access Program in 2019 as part of the college's Indigenous Peoples Initiatives Community (IPIC). The program supports prospective and current Indigenous engineering students in three distinct initiatives: a year-long Pathways to Engineering support program for students that do not yet meet Engineering program prerequisites; a multi-day Summer Bridging Program; and a Student Success Program that offers social, academic and financial supports, including facilitated study sessions. The commitment to increase the number of Indigenous students in the College of Engineering is included in its newly updated [strategic plan](#), which identifies Indigenization as one of four strategic pillars.

PEER-certified Campus - In 2019, the Carl J. Eckhardt Combined Heating and Power Complex at [University of Texas at Austin](#) achieved record setting efficiency of 85%, in addition to achieving PEER (Performance Excellence in Electricity Renewal) recertification. UT-Austin first received [PEER certification](#) in 2014, becoming the first PEER-certified campus in the world. Modeled after the USGBC LEED green building rating system, PEER is a certification program that measures and improves power system performance and electricity delivery systems. The PEER rating system includes four credit categories: reliability & resiliency, energy efficiency & environment, operational effectiveness, and customer contribution. UT Austin also provides real time energy use data to its building occupants.

Student dancing at University of Saskatchewan graduation Powwow. Photo credit: University of Saskatchewan



Institutional Highlights

Reduction in Chemical Use and Waste Water for Heating and Cooling - Between 2016 and 2017, the [University of Wisconsin–Madison](#) discontinued chemical treatments for lake water used in certain heating and cooling systems, and that water now flows from one lake to another in a process that mimics the natural flow of the local watershed. Both energy usage and emissions have been reduced, with an annual savings of over \$190,000. In addition, hundreds of small, foam balls that clean evaporator and condenser tubes were introduced in a trial chiller. This cleaning method increased cooling capacity and saved \$40,000 in natural gas. Once the foam balls are added to the additional three chillers, it is expected that the plant will save \$220,000 annually in natural gas reductions.

Alliance for Water Stewardship Partnership - The [University of Wisconsin-Milwaukee](#) has partnered with the Alliance for Water Stewardship (AWS) to develop the first curricular program in the nation dedicated to training students in professional water stewardship planning according to the AWS Standard. Through a pilot graduate course, students compiled site and watershed-related data, identified and interviewed local stakeholders to understand shared water challenges and risks, and drafted a water stewardship plan for the School of Freshwater Sciences and Main Kenwood Campus sites. The curriculum will be adopted for subsequent semesters to tackle two additional campus sites, furthering UWM's goal of being the first higher education institution in the nation to house an AWS-certified building.

Pictured are Erin Ganzke (left) and Christopher Dwyer, two University of Wisconsin-Milwaukee students that participated in the pilot graduate class for the Alliance for the Water Stewardship Program. Not pictured are other student participants: Hannah Burby, Spencer Charczuk, Megan Weller, and Kate Markiewicz. Photo credit: University of Wisconsin-Milwaukee



Institutional Highlights

Civic Identity Framework - Civic Identity serves as the overarching educational framework at [Warren Wilson College](#), and it prioritizes civic responsibility and sustainability as the core ethos for each graduate. There are explicit sustainability themes within the college-wide learning outcomes, which require students to be able to understand and contextualize complex issues, effectively engage in a pluralistic setting, commit to ethical integrity, justice, and equity, and collaboratively problem-solve with diverse partners upon graduation. Warren Wilson College is formally recognized as a [work college](#) by the U.S. Department of Education, with required participation in Work Crews to foster collaboration, and a regional community engagement project as civic responsibility in action.

Individualized Energy Dashboards for Students - Following the installation of Lucid Energy Dashboards and submeters on upper division housing, [Washington & Lee University](#) energy specialists have created dashboards for each housing space, and shared custom dashboard links with resident students. Students can easily review statistics on energy usage and see how they rate against neighbors in their village and across campus. The dashboards converted energy data into dollars, offering students a “real-world” picture of their energy use and costs. Rather than cash prizes for monthly energy-saving winners, the sustainability team worked with local restaurants and a local therapy dog operation to offer a catered dinner and an evening with one of the service dogs as a grand prize.

Time spent with a local therapy dog was among the top prizes for a recent Washington and Lee University Energy Competition. Photo credit: W&L Communications Office



Methodology

Top Performers

Top Performer scores are based on performance at the time of STARS report submission. All top performer data presented in this publication reference STARS Version 2.0, 2.1, and 2.2 reports submitted between March 7, 2017, and March 6, 2020. Reports submitted after this date are eligible for inclusion in future publications.

Top performers in each impact area were determined based on the percentage of applicable points earned within the relevant subcategory. Because one of the goals of this publication is to provide guidance for prospective students, institutions with valid STARS reports that are no longer operating have been excluded from the lists. For institutions with multiple valid reports, only scores from the most recent reports were considered. Ten institutions were identified in each list except in cases where scores were tied, in which case, more were listed. For some impact areas, tiebreaks (+) were determined based on institutions' pursuit of [Exemplary Practice credits](#) related to that topic. Under Campus Engagement and Coordination & Planning, new credits and standards were introduced with STARS 2.1 that better recognize top performance and create greater variation in scoring. As a result, Top Performers in those sections are based on Version 2.1 and 2.2 scores only.

AASHE staff reviewed all credits within a respective impact area for top-performing institutions in an effort to ensure that content met credit criteria. Staff requested follow-up for any identified issues and most institutions addressed them through data revisions or clarifications. Institutions that did not address identified issues have been excluded from the lists.

Institution Type

For the section on Overall Top Performers by Institution Type, four classifications (definitions listed below) were adapted from the [Carnegie Classification of Institutions of Higher Education](#)[®]. U.S. institutions were classified based on their most recent IPEDS classification. Since very few Tribal or Special Focus institutions participate in STARS, U.S. institutions with these formal classifications were placed in the most appropriate of the remaining categories. For institutions outside of the U.S., we relied on reported data found under the STARS Institutional Characteristics section.

- Associate Colleges - Institutions where all degrees are at the associate's level, or where baccalaureate degrees account for less than 10% of all degrees
- Baccalaureate institutions - Colleges and universities where baccalaureate degrees represent at least 10% of all undergraduate degrees and where fewer than 50 master's degrees or 20 doctoral degrees are awarded annually
- Master's institutions - Colleges and universities that award at least 50 master's degrees and fewer than 20 doctoral degrees annually
- Doctoral Institutions - Institutions that awarded at least 20 research/scholarship doctoral degrees annually, including doctoral degrees that qualify recipients for entry into professional practice

Reports from institutions recognized on the Top 10 lists for each institution type were not subject to the same review process conducted for top-performing institutions by impact area largely due to constraints of reviewing so many reports in full. The STARS website includes further details about [STARS data quality and reporting assurance](#).

Methodology

Institutional Highlights

The Institutional Highlights section recognizes projects and initiatives from institutions that submitted reports between March 2, 2019 and March 6, 2020 (previous submissions were considered in past SCIs). Initiatives were selected by a team of AASHE staff based on the level of innovation and overall impact in advancing sustainability, potential for replicability, and the added impacts this would present. With the release of STARS 2.2, an optional Points of Distinction credit was introduced that allows institutions to highlight up to three programs, initiatives, or accomplishments that best reflect their leadership for sustainability. Several highlights and images provided in this year's SCI were pulled from the contents of this new credit.

Average Scores

Each section of the SCI includes graphs presenting average scores for all institutions, along with 2020 counts, by country and by institution type. Counts vary slightly between Impact areas due to credit pursuit and applicability. This content corresponds to the same timeframe that was used to identify top performers. Average scores from past years were included for the first time in this year's SCI to allow for longitudinal comparisons and to highlight possible trends. For institutions that submitted multiple reports over this three-year period, only score information from their most recent, rated reports was included.

STARS of Data Accuracy

All STARS submissions receive a standard review by AASHE staff that covers approximately one-third of all STARS credits, and includes those credits that are most often misinterpreted (reports under a provisional Platinum rating receive a more comprehensive review). The institutions in this list are recognized for submitting reports in the last calendar year, between March 2, 2019 and March 6, 2020, with the fewest reviewed credits with issue(s) that required revision or clarification.

Solar Array on the Ontario Tech Farmlands. Photographer credit: Ontario Tech Communication and Marketing Department



About STARS

STARS is a transparent, self-reporting framework for colleges and universities to measure their sustainability performance. It was developed by the Association for the Advancement of Sustainability in Higher Education (AASHE) with broad participation from the higher education community. STARS participants submit data to earn a Bronze, Silver, Gold or Platinum rating, or recognition as a STARS Reporter. The credits are organized into four categories: Academics, Engagement, Operations and Planning & Administration. As of March 2020, STARS reports were submitted by 520 institutions in 14 countries, covering 49 US States and eight Canadian provinces. All reports can be accessed at stars.aashe.org.



A Corporate Responsibility and Sustainability Summer School hosted at the American College of Greece, the first STARS-rated institution in Greece.



STARS of Data Accuracy

These institutions are recognized for submitting reports between March 2019 and March 2020 with the fewest data accuracy issues. We congratulate the STARS liaisons, data entry users, data providers and others who work to provide high quality information through STARS.

Zero Issues Found

Institution	Rating	Location
Elon University	Silver	Elon, NC
Oregon State University	Gold	Corvallis, OR
Texas A&M University	Gold	College Station, TX

Few Issues Found

Institution	Rating	Location
Calvin University	Silver	Grand Rapids, MI
Colorado State University	Platinum	Fort Collins, CO
Houghton College	Bronze	Houghton, NY
Paul Smith's College of Arts & Sciences	Bronze	Paul Smiths, NY
Selkirk College	Silver	Castlegar, BC
Southern Illinois University Carbondale	Silver	Carbondale, IL
United World College-USA	Bronze	Montezuma, NM
University of Montevallo	Bronze	Montevallo, AL
University of Nebraska at Omaha	Silver	Omaha, NE
University of Wisconsin-Platteville	Silver	Platteville, WI

An institution focused on international education with 235 students representing 94 countries, United World College achieved its first STARS rating in December 2019.



STARS Ratings

Institutions with valid reports between March 7, 2017, and March 6, 2020.

Platinum

Arizona State University
Colorado State University
Cornell University
Stanford University
Thompson Rivers University
University of California, Irvine
University of Connecticut
University of New Hampshire
Université de Sherbrooke



Cornell University in Ithaca, New York was among four institutions to receive a Platinum STARS rating in 2020. Photo credit: Cornell University Photography



STARS Ratings

Gold

Agnes Scott College
American University
Appalachian State University
Babson College
Bard College
Bates College
Belmont University
Bentley University
Berea College
Binghamton University
Bowdoin College
Bucknell University
California Polytechnic State University
California State University, Channel Islands
California State University, Chico
California State University, Northridge
Carnegie Mellon University
Chatham University
Clarkson University
Colby College
Colgate University
College of the Atlantic
Colorado College
Columbia University



Concordia University
Dalhousie University
Denison University
Dickinson College
Emerson College
Emory University
Fanshawe College

Contractors install solar panels on the School of International Service at American University in Washington, DC. Photo credit: Jeffrey Watts, American University Photographer



STARS Ratings

Gold

Fleming College
Florida Gulf Coast University
Florida State University
Furman University
George Mason University
George Washington University
Grand Valley State University
Green Mountain College
Hampshire College
Humber College
Humboldt State University
Indiana University Bloomington
Indiana University-Purdue University Indianapolis
Iowa State University
Ithaca College
James Madison University
Lewis & Clark College
Loyola Marymount University
Loyola University Chicago
Luther College
Macalester College
Massachusetts Institute of Technology
Miami University
Michigan State University
Middlebury College
Mohawk College
Muhlenberg College
New York University
Northern Arizona University
Northland College
Northwestern University
Nova Scotia Community College
Oberlin College
Oregon State University
Pennsylvania State University
Polytechnique Montreal
Portland State University
Princeton University
Rice University
Saint Mary's College of California
San Jose State University
Santa Clara University
Seattle University
Simon Fraser University



State University of New York at Cortland
SUNY College of Environmental Science and Forestry
Stevens Institute of Technology
Texas A&M University
The American College of Greece
The Ohio State University
The University of Texas at Dallas
Unity College
Universite Laval
University at Albany
University at Buffalo
University College Cork - National University of Ireland, Cork
University of Alberta
University of Arizona
University of Arkansas
University of Calgary
University of California, Berkeley
University of California, Davis
University of California, Los Angeles
University of California, Merced
University of California, San Diego
University of California, Santa Barbara
University of California, Santa Cruz
University of Cincinnati
University of Colorado Boulder
University of Colorado Colorado Springs
University of Dayton

STARS Ratings

Gold

University of Georgia
University of Houston
University of Illinois, Urbana-Champaign
University of Louisville
University of Manitoba
University of Maryland, College Park
University of Massachusetts Amherst
University of Massachusetts Lowell
University of Miami
University of Michigan
University of Minnesota, Duluth
University of Minnesota, Morris
University of Missouri
University of North Carolina at Chapel Hill
University of Ontario Institute of Technology
University of Oregon
University of Pennsylvania
University of Richmond
University of San Diego
University of South Florida
University of Texas at Austin
University of Texas Rio Grande Valley
University of Vermont
University of Victoria
University of Virginia
University of Washington, Seattle
University of Wisconsin-Milwaukee
University of Wisconsin-Oshkosh
University of Wisconsin-River Falls



University of Wisconsin-Stevens Point
Vassar College
Virginia Tech
Wake Forest University
Warren Wilson College
Washington University in St. Louis
Wellesley College
Wells College
Western University
Wilfrid Laurier University
Worcester Polytechnic Institute

University of Minnesota, Duluth students tour one of the campus' rain gardens. Photo credit: Bryan French



STARS Ratings

Silver

Amherst College
Antioch College
Aquinas College
Auburn University
Baldwin Wallace University
Ball State University
Barnard College
Beloit College
Black Hills State University
Boston College
Boston University
Bryant University
Bryn Mawr College
California State Polytechnic University, Pomona
California State University, Bakersfield
California State University, Dominguez Hills
California State University, Fullerton
California State University, Long Beach
California State University, Los Angeles
California State University, Monterey Bay
California State University, San Marcos
California State University, Stanislaus
Calvin University
Carleton College
Case Western Reserve University
Central Community College
Central Michigan University
Central New Mexico Community College
Champlain College
Claremont McKenna College
Clemson University
Cleveland State University
College of Charleston
College of Lake County
Connecticut College
Delta College
Durham College
Earlham College
East Carolina University
Eastern Connecticut State University
Eastern Mennonite University
Ecole de Technologie Supérieure
Elon University



Endicott College
Evergreen State College, The
FIE: Foundation for International Education
Florida International University
Goshen College
Harvey Mudd College
Haverford College
HEC Montréal
Hobart and William Smith Colleges
Hope College
Indiana State University
Johnson County Community College
Keene State College
Knox College
Lafayette College
Lawrence University
Lehigh University
Louisiana State University
MacEwan University
Mills College
Missouri State University
Missouri University of Science and Technology
Montana State University
Mount Royal University
North Seattle College
Northern Michigan University
Ohio University

STARS Ratings

Silver

Oklahoma State University
Orange County Community College
Pacific University
Pitzer College
Portland Community College
Pratt Institute
Purchase College - State University of New York
Radford University
Raritan Valley Community College
Rochester Institute of Technology
Saint Joseph's College - ME
Saint Michael's College
San Diego State University
San Francisco State University
Selkirk College
Seneca College
Sewanee - The University of the South
Sheridan College (Ontario)
Skidmore College
Slippery Rock University
Smith College
Soka University of America
South Dakota State University
Southern Illinois University Carbondale
Southern Oregon University
St. Lawrence University
State University of New York at Brockport
State University of New York at Geneseo
State University of New York at New Paltz
State University of New York at Oneonta
Swarthmore College
Syracuse University
Temple University
Tennessee Technological University
The New School
The Ohio State University at Lima
The Ohio State University at Mansfield
The Ohio State University at Marion
The Ohio State University at Newark
Tufts University
Universidad Autonoma de Tamaulipas
Universidad San Francisco de Quito
Universite de Montreal
University of Alabama at Birmingham



Raritan Valley Community College students enjoy the two-story living wall in the student center. Captured rainwater feeds the living wall and the building's toilets.



STARS Ratings

Silver

University of Central Florida
University of Florida
University of Idaho
University of Illinois at Chicago
University of Iowa
University of Kentucky
University of Maine
University of Maryland, Baltimore County
University of Massachusetts Medical School
University of Mount Union
University of Nebraska - Lincoln
University of Nebraska at Omaha
University of New Brunswick, Fredericton
University of North Carolina, Greensboro
University of Notre Dame
University of Ottawa
University of Pittsburgh
University of Rochester
University of Saskatchewan
University of South Florida St. Petersburg
University of St. Thomas
University of Tennessee at Knoxville
University of the Pacific
University of Utah
University of Waterloo
University of West Georgia
University of Winnipeg
University of Wisconsin-Green Bay
University of Wisconsin-Madison
University of Wisconsin-Platteville
University of Wisconsin-Whitewater
Utah State University



Villanova University
Virginia Commonwealth University
Washington and Lee University
Weber State University
Wesleyan University
West Chester University of Pennsylvania
Western Colorado University
Western Kentucky University
Western Michigan University
Western Technical College
Western Washington University
Westminster College - Utah
Whitman College
Williams College
Yale University

Spring tree planing at Universite de Montreal. Photo credit: Nathalie photographie



STARS Ratings

Bronze

American University of Sharjah
Austin College
Butler University
California State University, East Bay
Cascadia College
Central Washington University
Chandler-Gilbert Community College
Concordia College - Moorhead
Creighton University
Drake University
Duquesne University
Eastern Kentucky University
Eureka College
Franklin W. Olin College of Engineering
Georgia College & State University
Gonzaga University
Houghton College
Illinois Institute of Technology
Illinois State University
Lebanon Valley College



Lewis University
Messiah College
Metropolitan Community College
Nova Southeastern University

Cascadia College students and faculty inspire love for native soils on Wetlands Day. Photo credit: Cascadia College Relations Team



STARS Ratings

Bronze

Paul Smith's College of Arts & Sciences
Penn State Erie, The Behrend College
Saint Louis University
Santa Rosa Junior College
Seattle Central College
Siena Heights University
South Seattle College
Southern New Hampshire University
Southwestern University
St. Lawrence College
State University of New York at Fredonia
State University of New York at Potsdam
Susquehanna University
Tarleton State University
Texas State University, San Marcos
Texas Tech University
Trinity College (CT)
United World College-USA
Universidade Aberta
University of Alabama in Huntsville
University of Delaware
University of Mississippi
University of Montana



University of Montevallo
University of New Haven
University of North Georgia
University of Wyoming
Washtenaw Community College
Whatcom Community College

Reporter

Austin Peay State University
Bow Valley College
California College of the Arts
Clark University
Fort Lewis College
Mount Holyoke College
Pace University
Randolph College
Stockton University
Vanderbilt University
Virginia Theological Seminary
Wentworth Institute of Technology



About AASHE

AASHE empowers higher education faculty, administrators, staff and students to be effective change agents and drivers of sustainability innovation. We work with and for higher education to ensure that our world's future leaders are motivated and equipped to solve sustainability challenges. Visit aashe.org to learn more.

Warren Wilson College's Myron Boon Hall is a LEED Gold Certified building. Warren Wilson has five LEED Certified buildings on its campus. Photo credit: Warren Wilson College



2020 Sustainable Campus Index

© Association for the Advancement of Sustainability in Higher Education (AASHE)

Content, analysis, and design by Monika Urbanski, Data & Resources Manager, AASHE

Institutional highlights, editing, and other contributions by Jasmine Xie, STARS & Resources Intern

Edited by Julian Dautremont, AASHE Director of Programs and Crystal Simmons, AASHE Programs Coordinator

www.aashe.org • stars@aashe.org Released November 9, 2020